

Saket

**PARKING
VITRIFIED
TILES**

500x

500MM

Saket

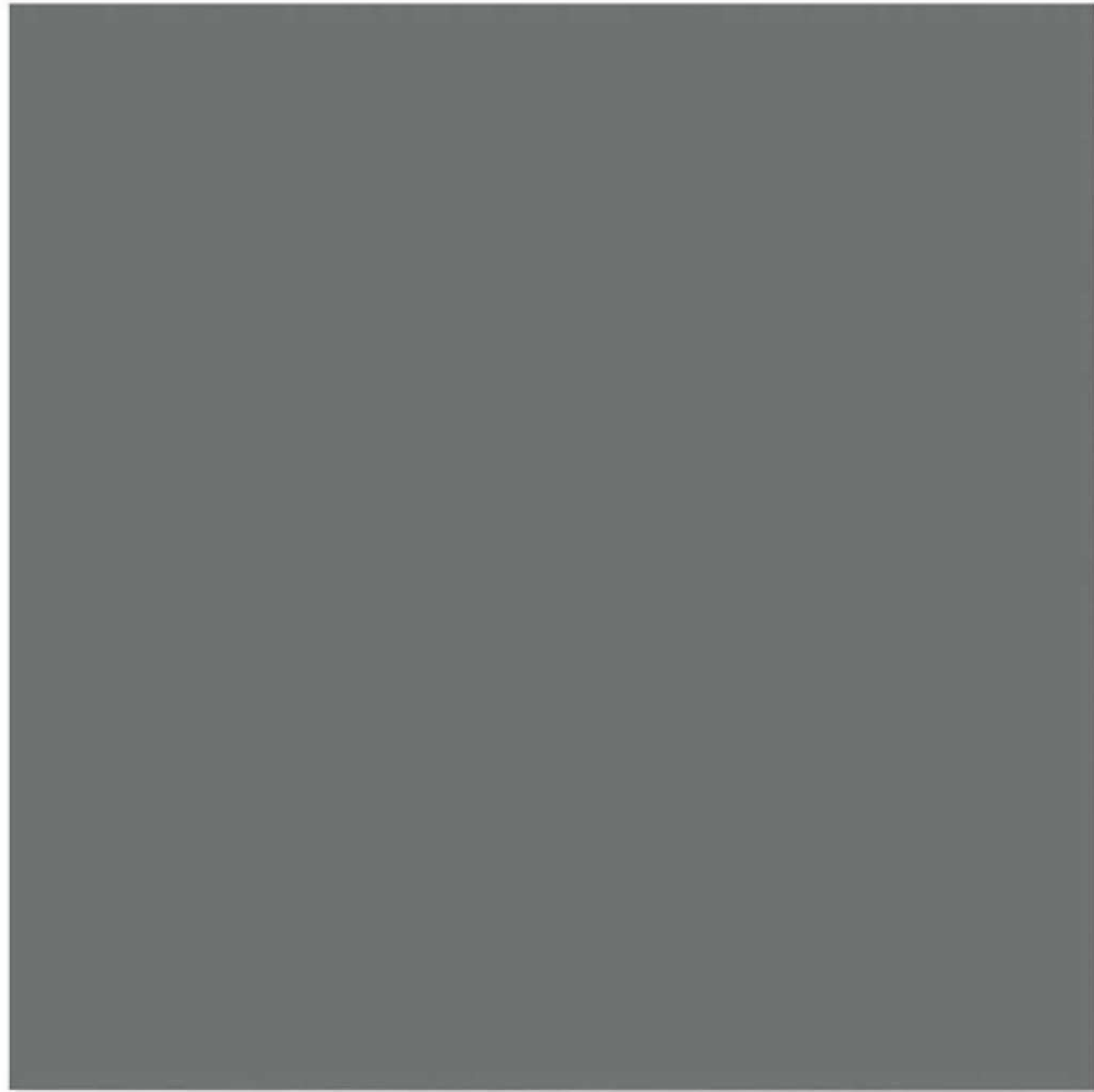
50x 50cm

PARKING
VITRIFIED
TILES

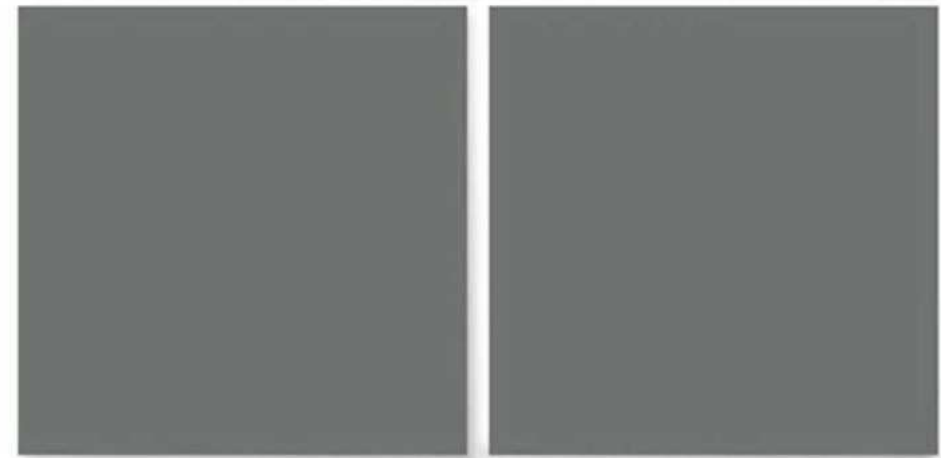
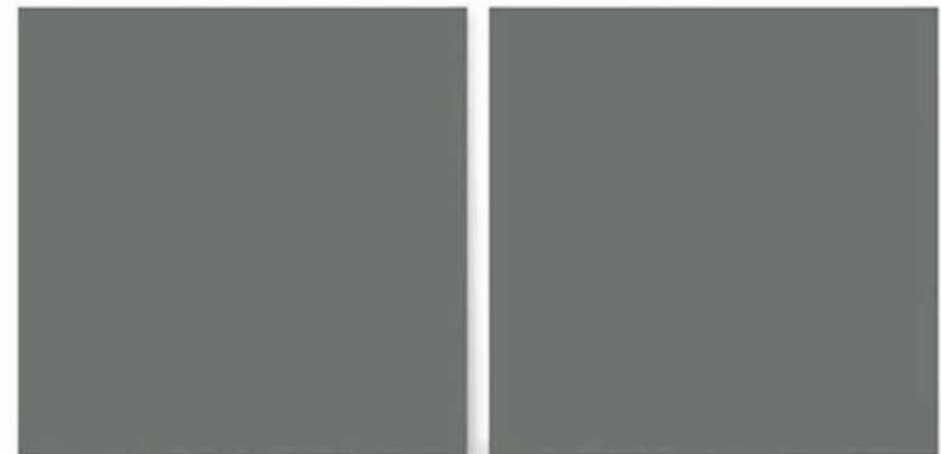
.....

All about an adventurous tile which has immense toughness with great look that complements every area.





| Size | Finish | Thickness | Random |
|-------------------|-------------|--------------|----------|
| <u>500x500 mm</u> | <u>Matt</u> | <u>12 mm</u> | <u>1</u> |



Applications



Residence



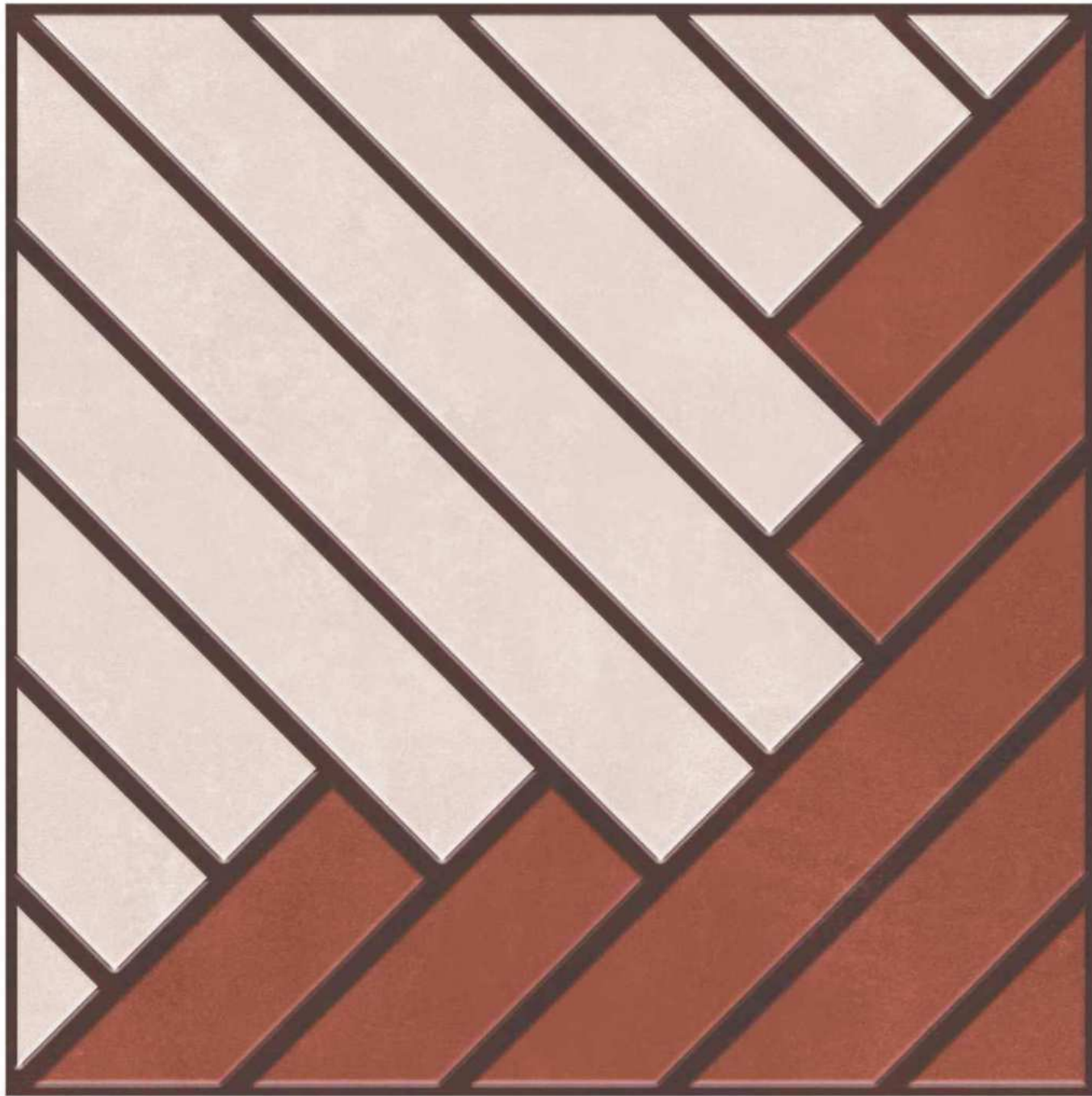
Commercial



Malls &
Restaurants

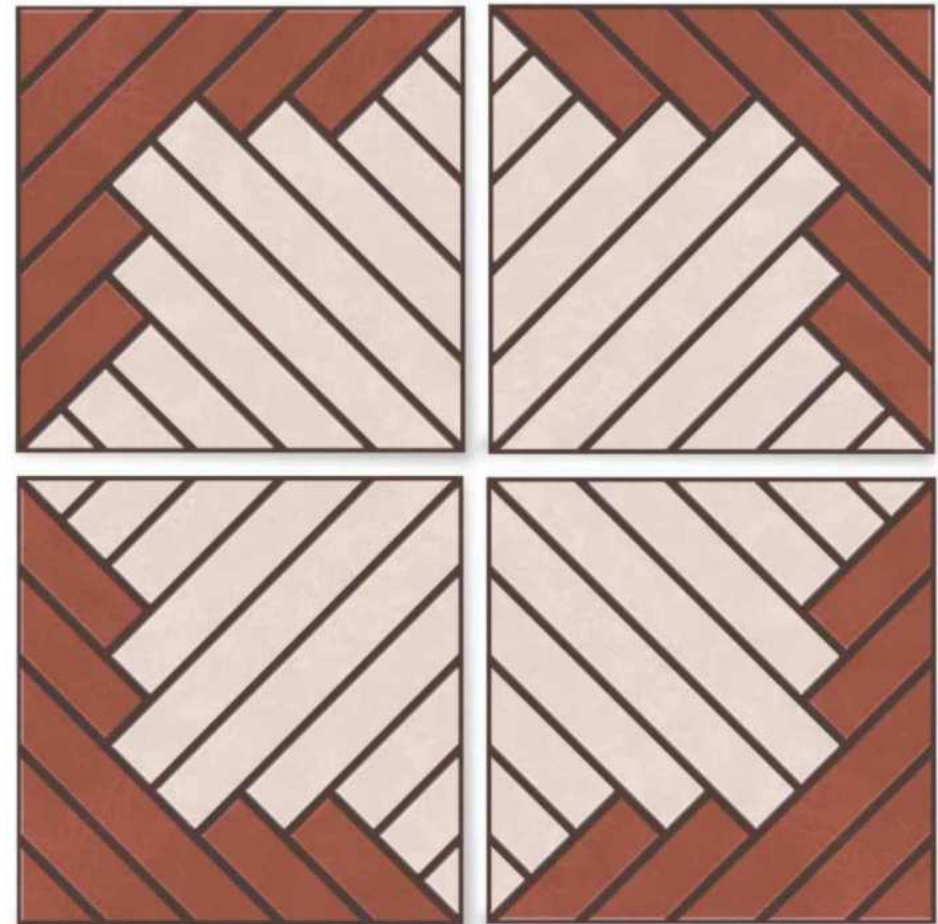


Public
Area



21001

| Size | Finish | Thickness | Random |
|-------------------|-------------|--------------|----------|
| <u>500x500 mm</u> | <u>Matt</u> | <u>12 mm</u> | <u>1</u> |



Applications



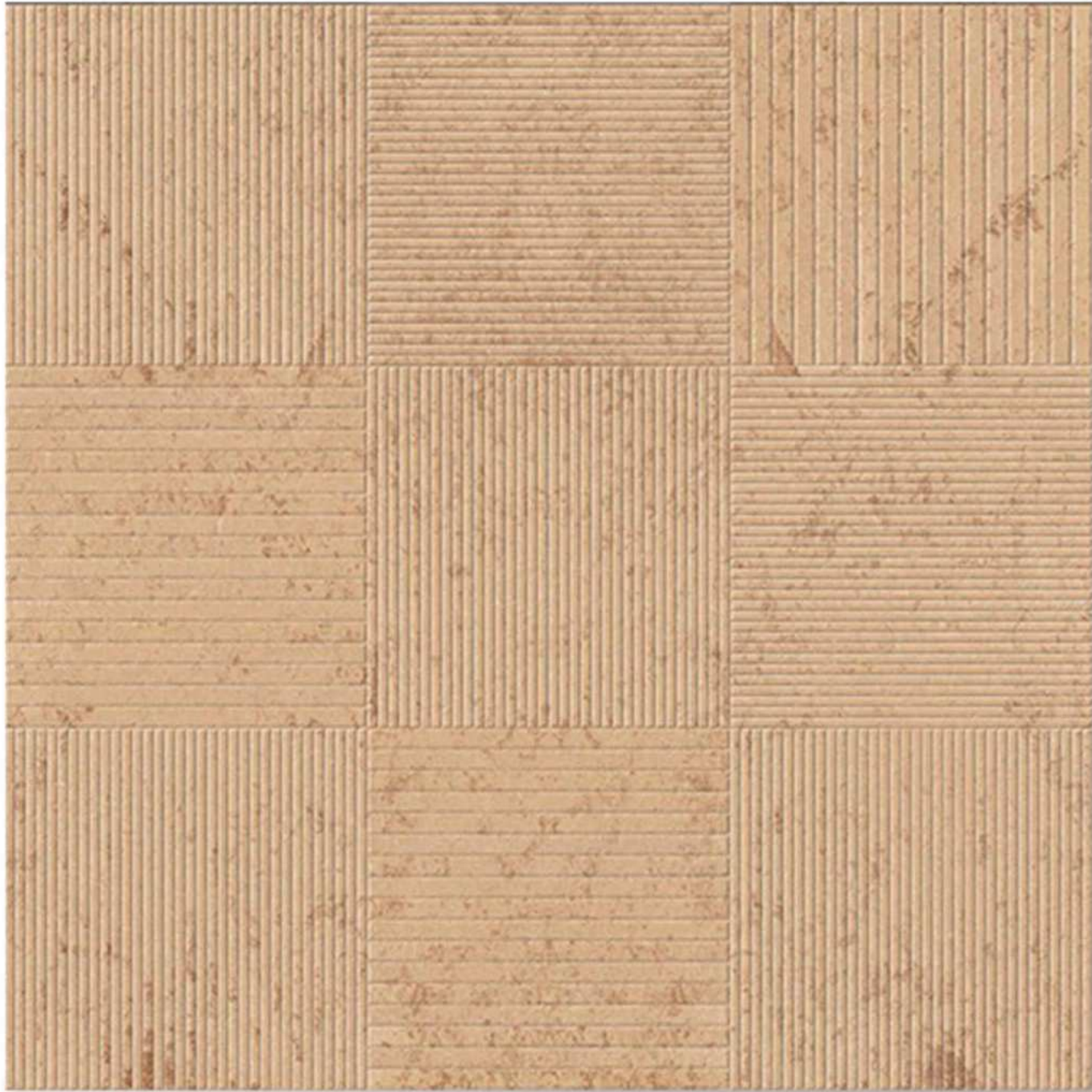
Residence

Commercial

Malls & Restaurants

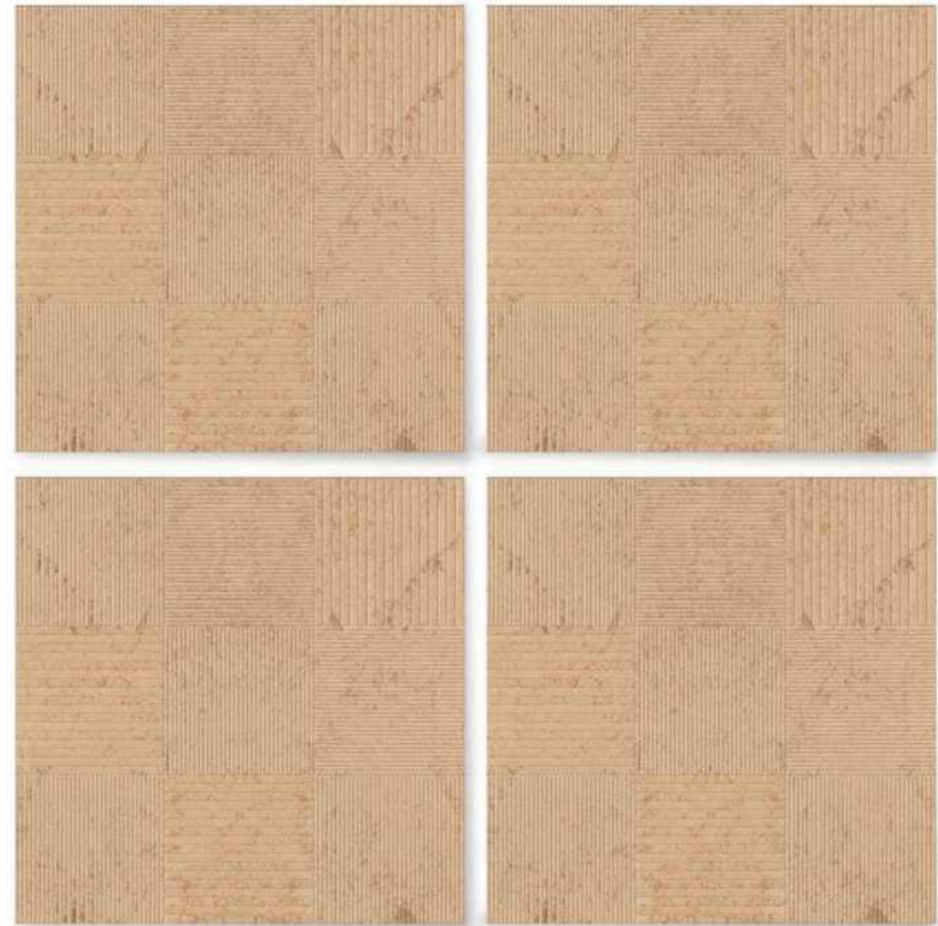
Public Area





21002

| Size | Finish | Thickness | Random |
|-------------------|-------------|--------------|----------|
| <u>500x500 mm</u> | <u>Matt</u> | <u>12 mm</u> | <u>1</u> |



Applications



Residence

Commercial

Malls & Restaurants

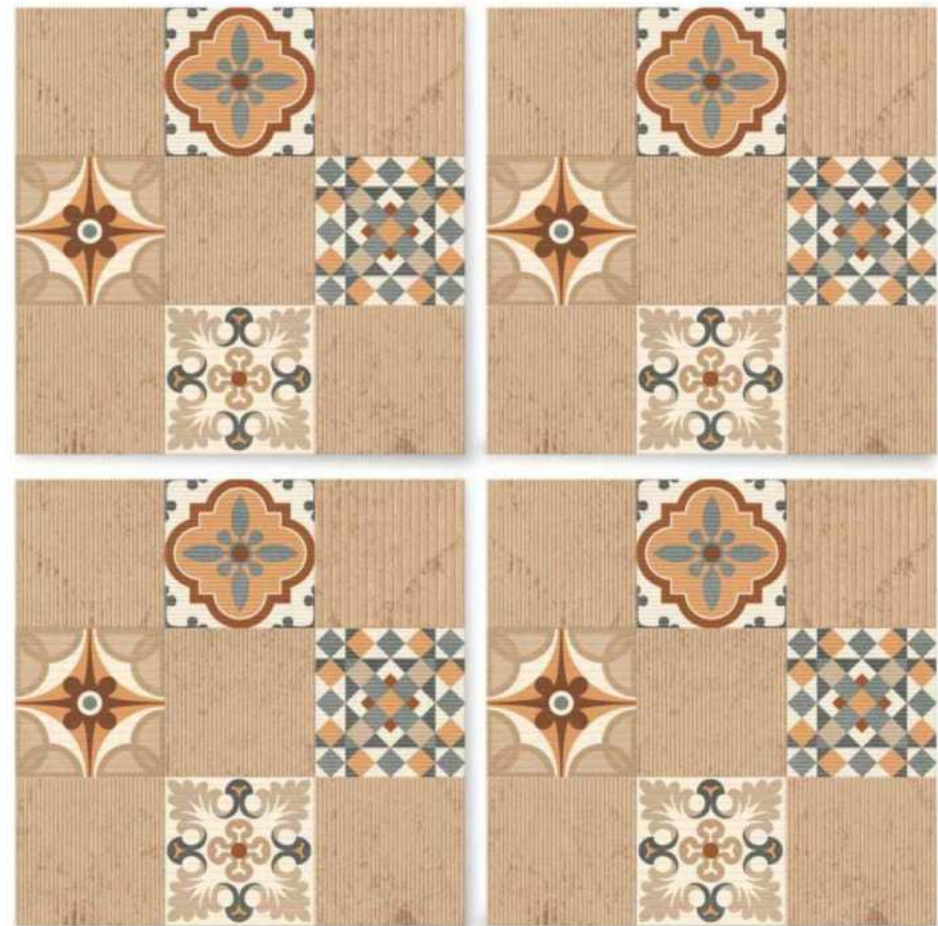
Public Area





21002 HL

| Size | Finish | Thickness | Random |
|-------------------|-------------|--------------|----------|
| <u>500x500 mm</u> | <u>Matt</u> | <u>12 mm</u> | <u>1</u> |



Applications



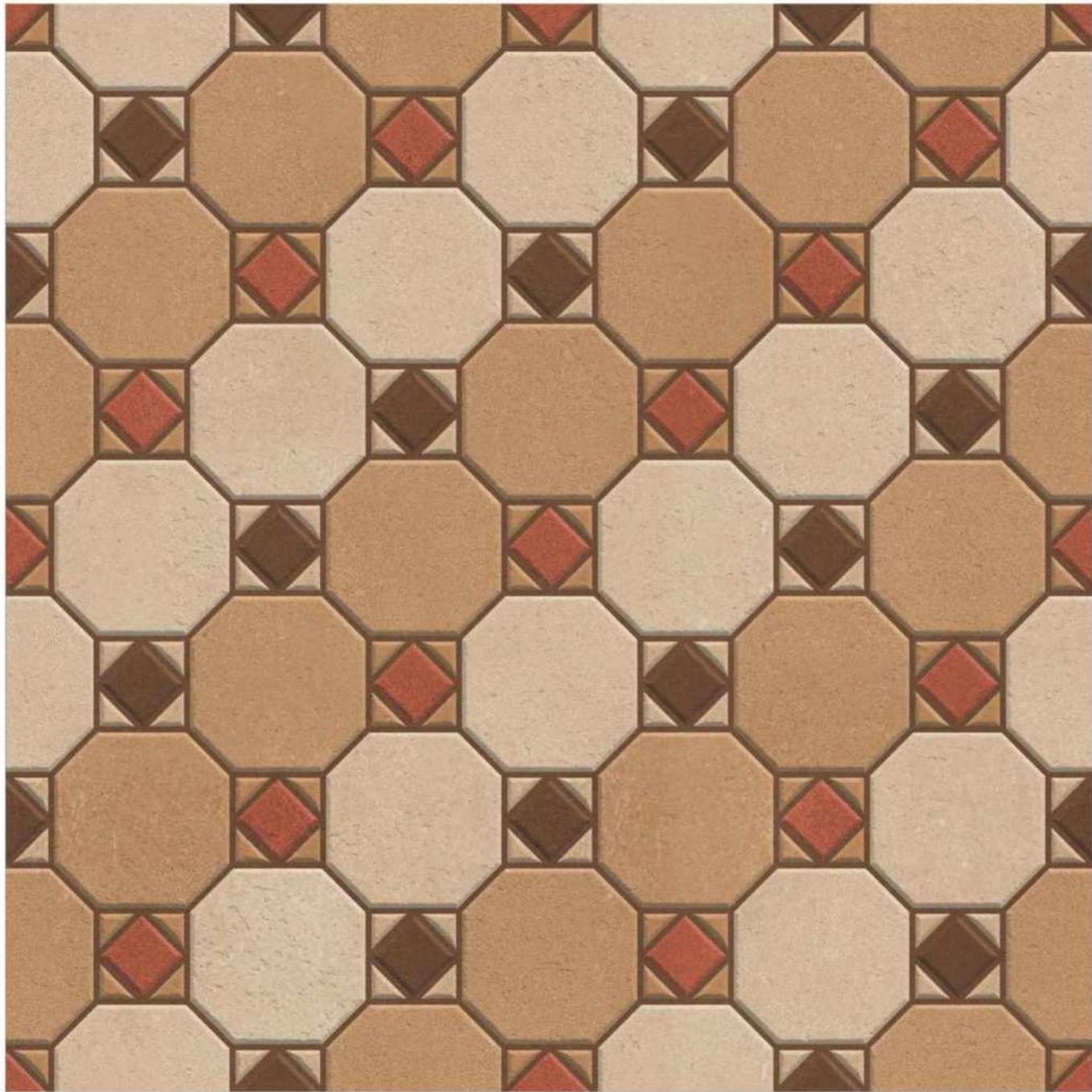
Residence

Commercial

Malls & Restaurants

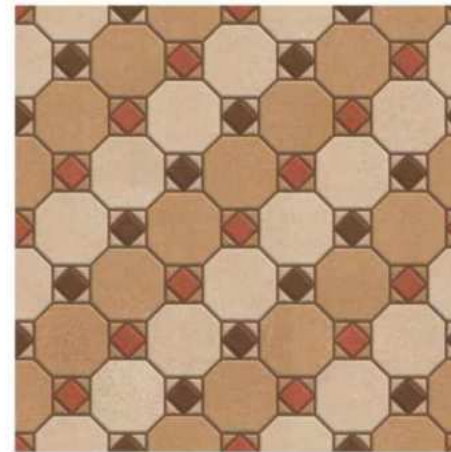
Public Area





21003

| Size | Finish | Thickness | Random |
|-------------------|-------------|--------------|----------|
| <u>500x500 mm</u> | <u>Matt</u> | <u>12 mm</u> | <u>1</u> |



Applications



Residence



Commercial



Malls &
Restaurants



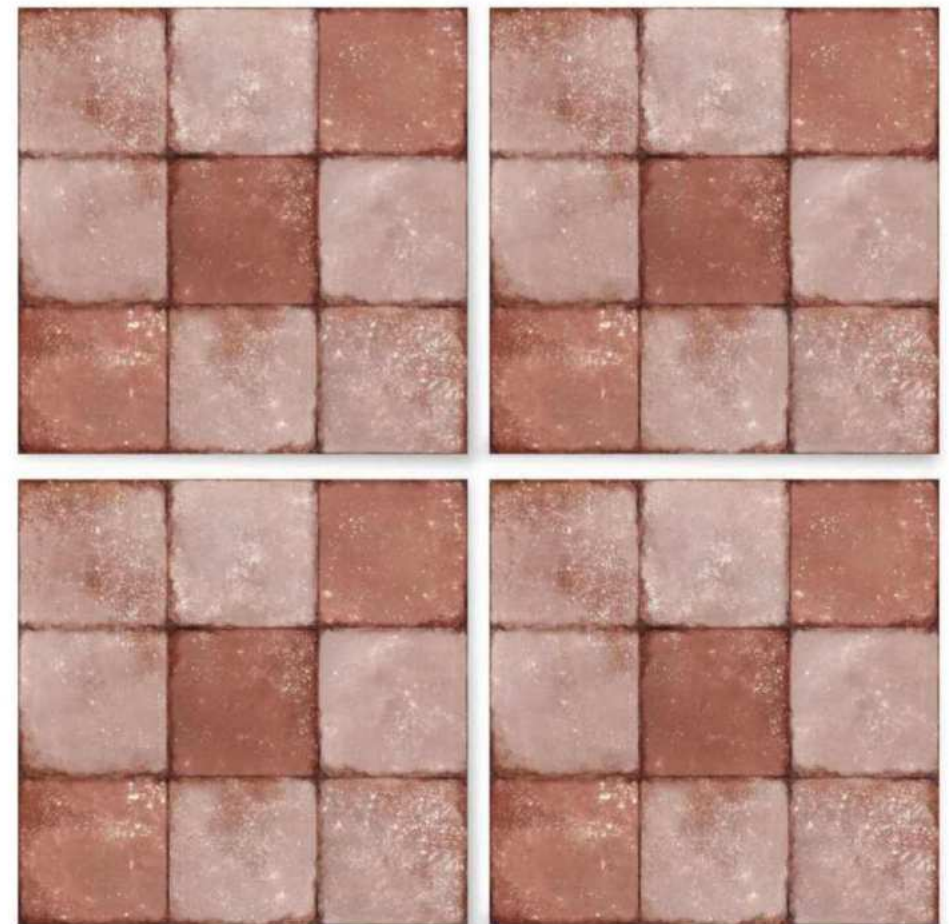
Public
Area





21004

| Size | Finish | Thickness | Random |
|-------------------|-------------|--------------|----------|
| <u>500x500</u> mm | <u>Matt</u> | <u>12</u> mm | <u>1</u> |



Applications



Residence

Commercial

Malls & Restaurants

Public Area





21005

| Size | Finish | Thickness | Random |
|-------------------|-------------|--------------|----------|
| <u>500x500 mm</u> | <u>Matt</u> | <u>12 mm</u> | <u>1</u> |



Applications



Residence Commercial Malls & Restaurants Public Area





21006

| Size | Finish | Thickness | Random |
|-------------------|-------------|--------------|----------|
| <u>500x500 mm</u> | <u>Matt</u> | <u>12 mm</u> | <u>1</u> |



Applications



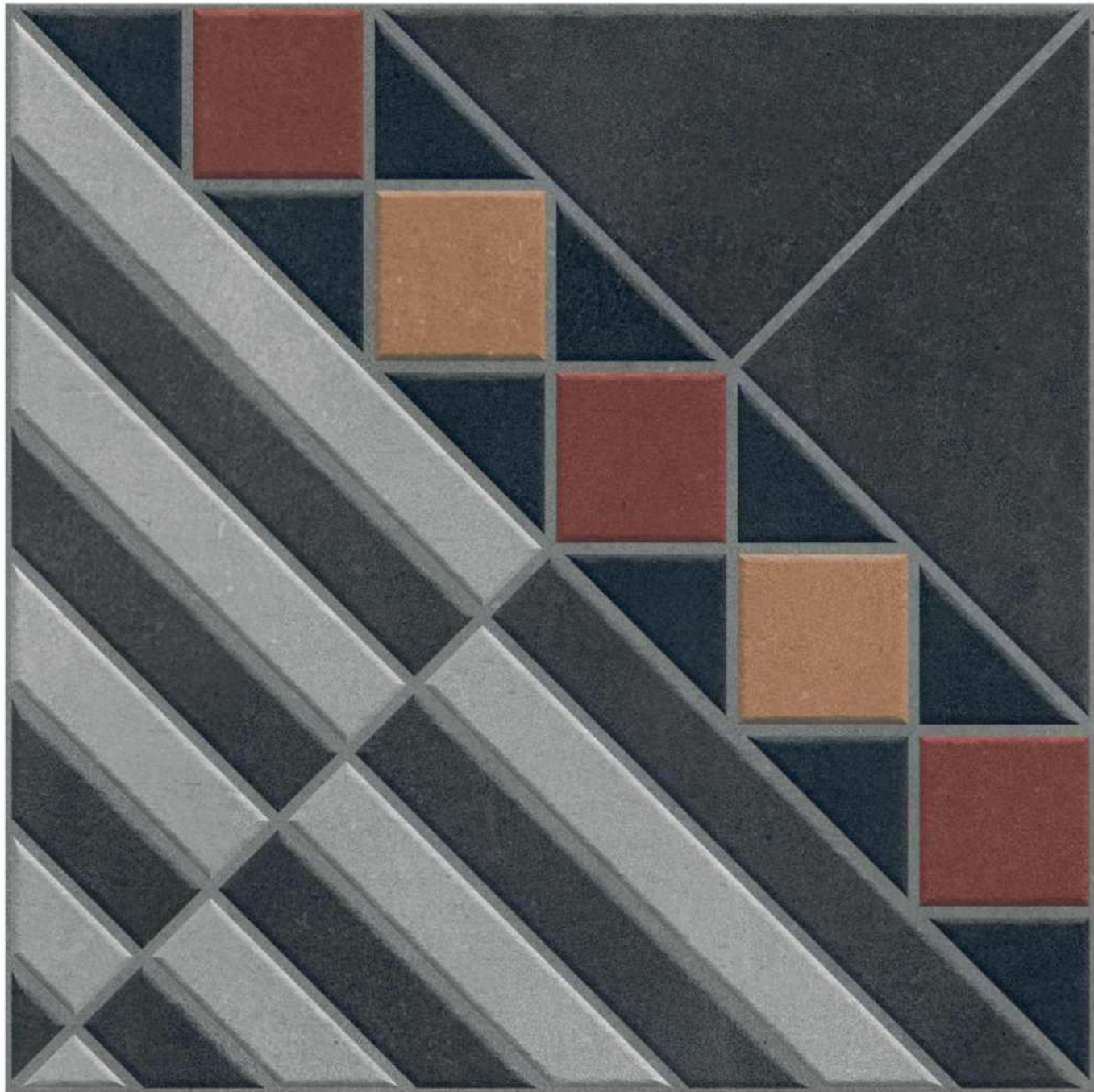
Residence

Commercial

Malls & Restaurants

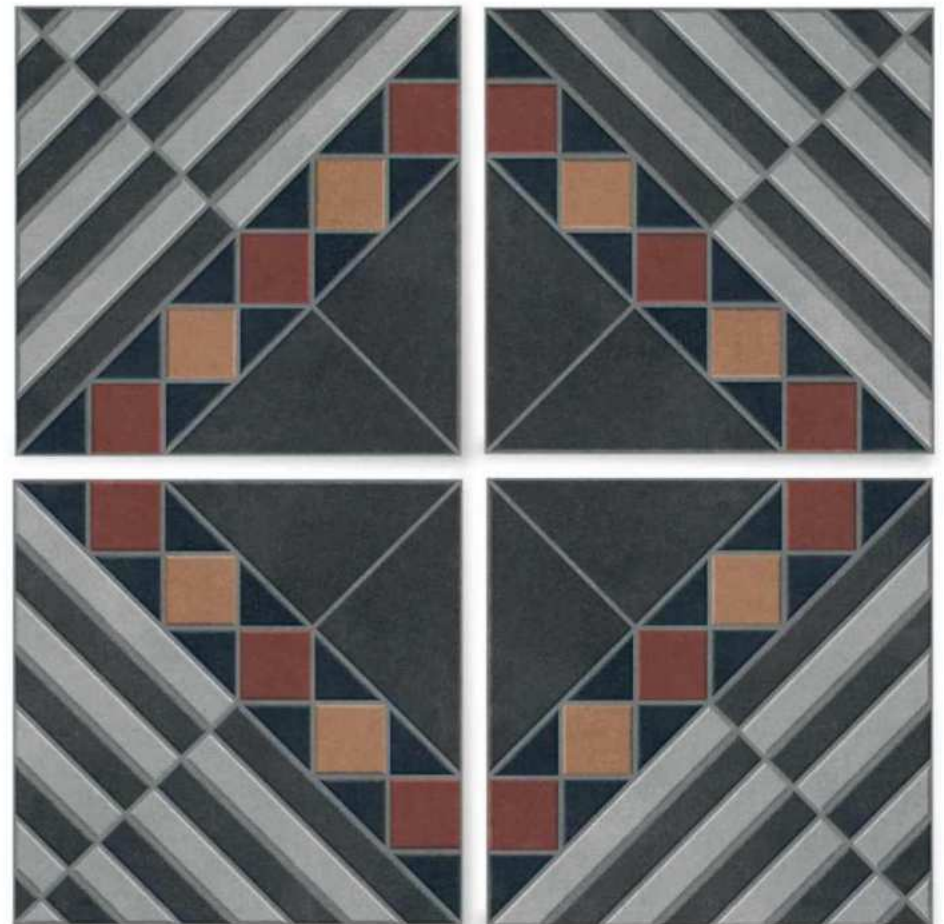
Public Area





21007

| Size | Finish | Thickness | Random |
|-------------------|-------------|--------------|----------|
| <u>500x500 mm</u> | <u>Matt</u> | <u>12 mm</u> | <u>1</u> |



Applications



Residence

Commercial

Malls & Restaurants

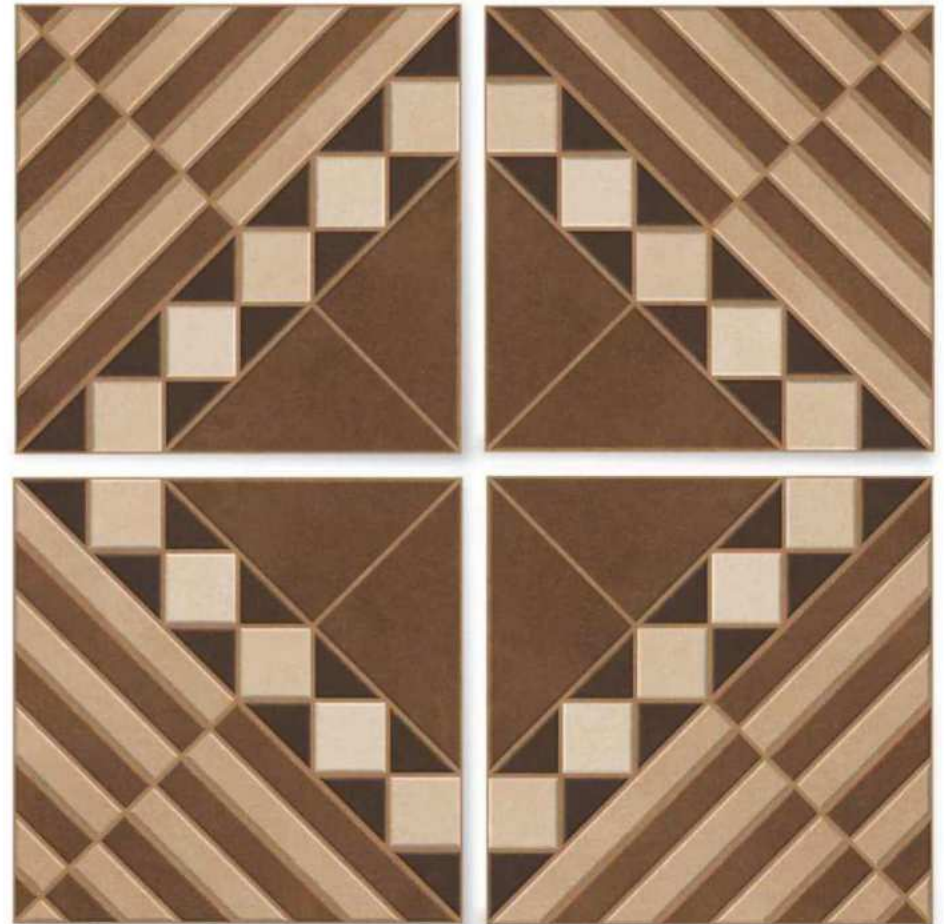
Public Area





21008

| Size | Finish | Thickness | Random |
|-------------------|-------------|--------------|----------|
| <u>500x500 mm</u> | <u>Matt</u> | <u>12 mm</u> | <u>1</u> |



Applications



Residence

Commercial

Malls & Restaurants

Public Area





21009

| Size | Finish | Thickness | Random |
|-------------------|-------------|--------------|----------|
| <u>500x500 mm</u> | <u>Matt</u> | <u>12 mm</u> | <u>1</u> |



Applications

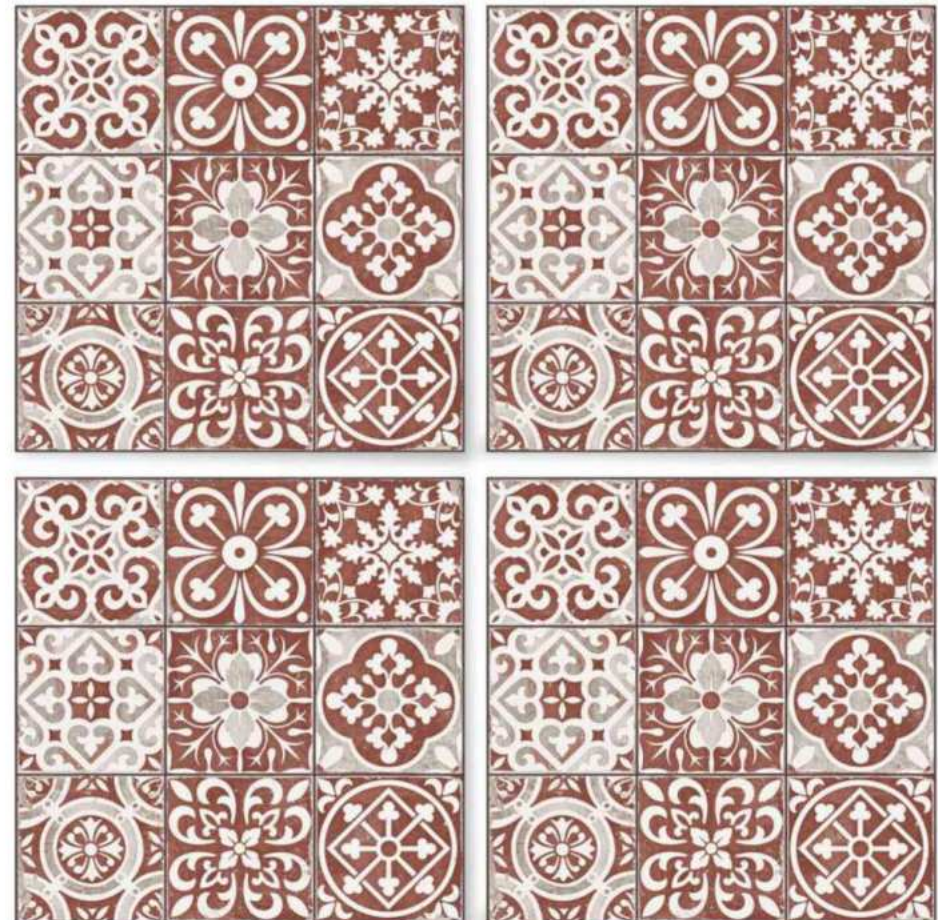






21010

| Size | Finish | Thickness | Random |
|-------------------|-------------|--------------|----------|
| <u>500x500 mm</u> | <u>Matt</u> | <u>12 mm</u> | <u>1</u> |

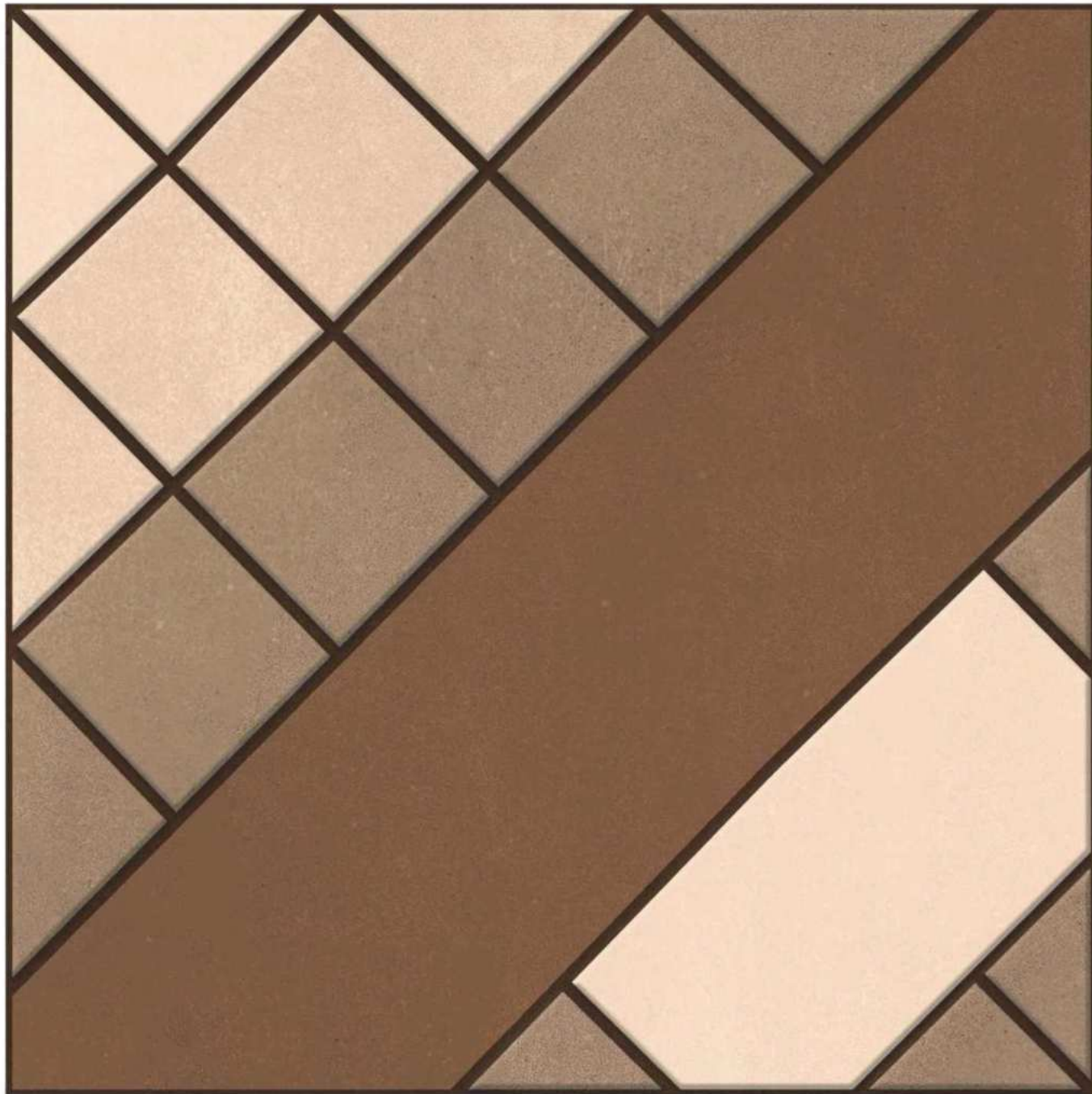


Applications



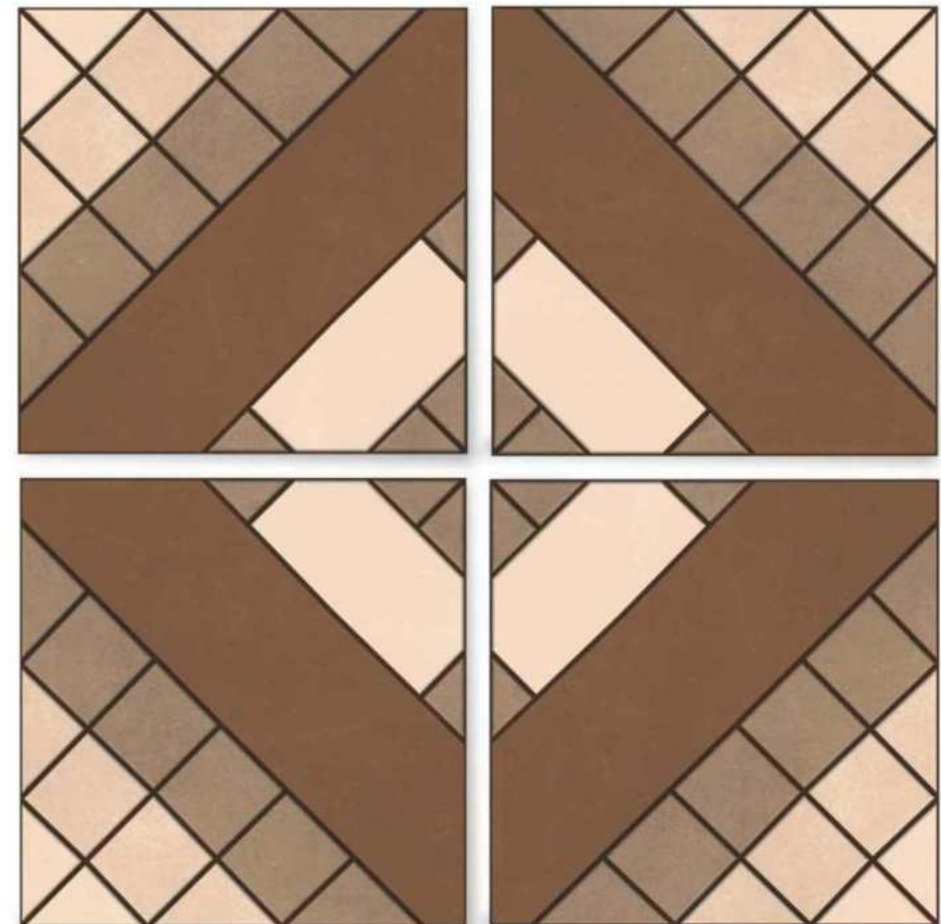
Residence Commercial Malls & Restaurants Public Area





21011

| Size | Finish | Thickness | Random |
|-------------------|-------------|--------------|----------|
| <u>500x500</u> mm | <u>Matt</u> | <u>12</u> mm | <u>1</u> |



Applications



Residence

Commercial

Malls & Restaurants

Public Area





21012

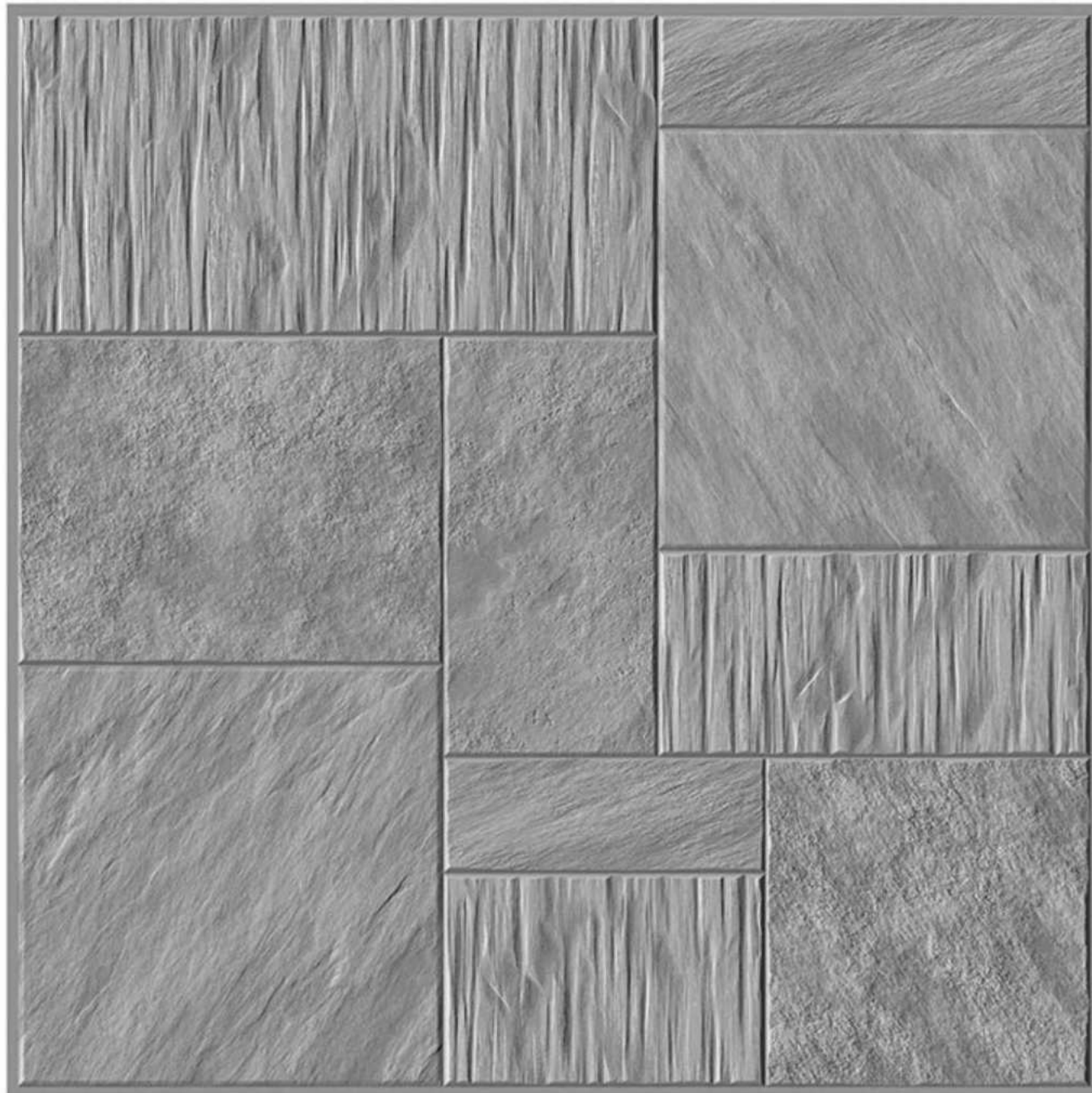
| Size | Finish | Thickness | Random |
|-------------------|-------------|--------------|----------|
| <u>500x500 mm</u> | <u>Matt</u> | <u>12 mm</u> | <u>1</u> |



Applications







| Size | Finish | Thickness | Random |
|-------------------|-------------|--------------|----------|
| <u>500x500 mm</u> | <u>Matt</u> | <u>12 mm</u> | <u>1</u> |



Applications



Residence

Commercial

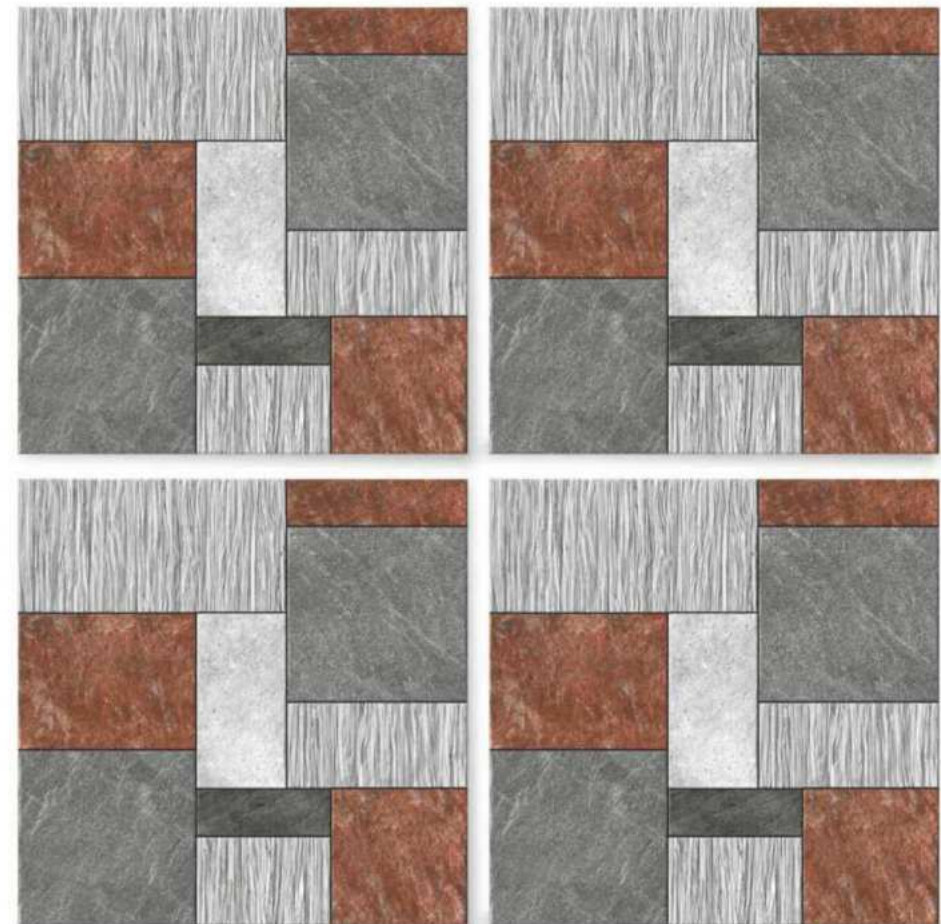
Malls &
Restaurants

Public
Area



21201

| Size | Finish | Thickness | Random |
|-------------------|-------------|--------------|----------|
| <u>500x500 mm</u> | <u>Matt</u> | <u>12 mm</u> | <u>1</u> |



Applications



Residence

Commercial

Malls & Restaurants

Public Area





21202

| Size | Finish | Thickness | Random |
|-------------------|-------------|--------------|----------|
| <u>500x500 mm</u> | <u>Matt</u> | <u>12 mm</u> | <u>1</u> |



Applications



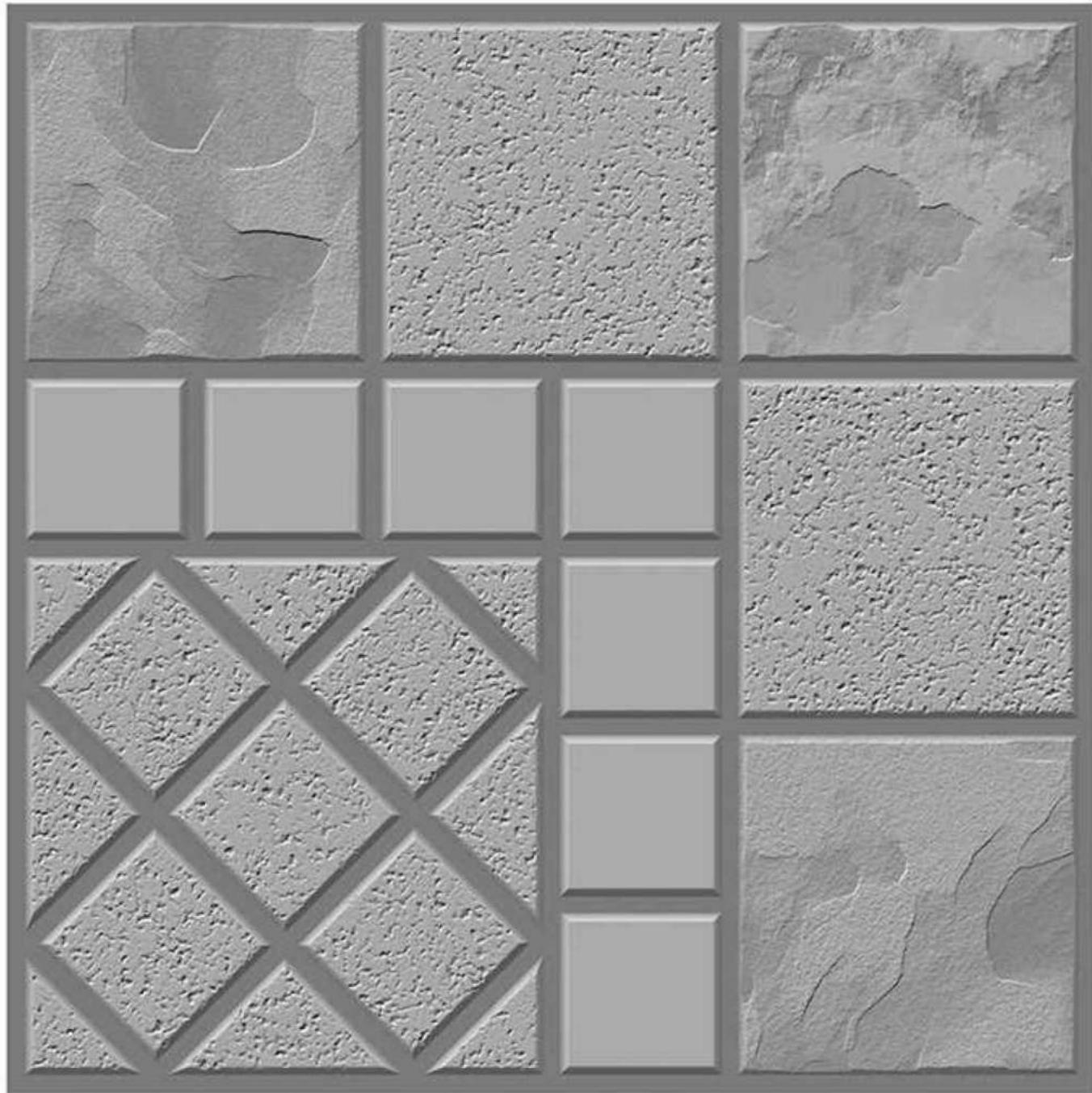
Residence

Commercial

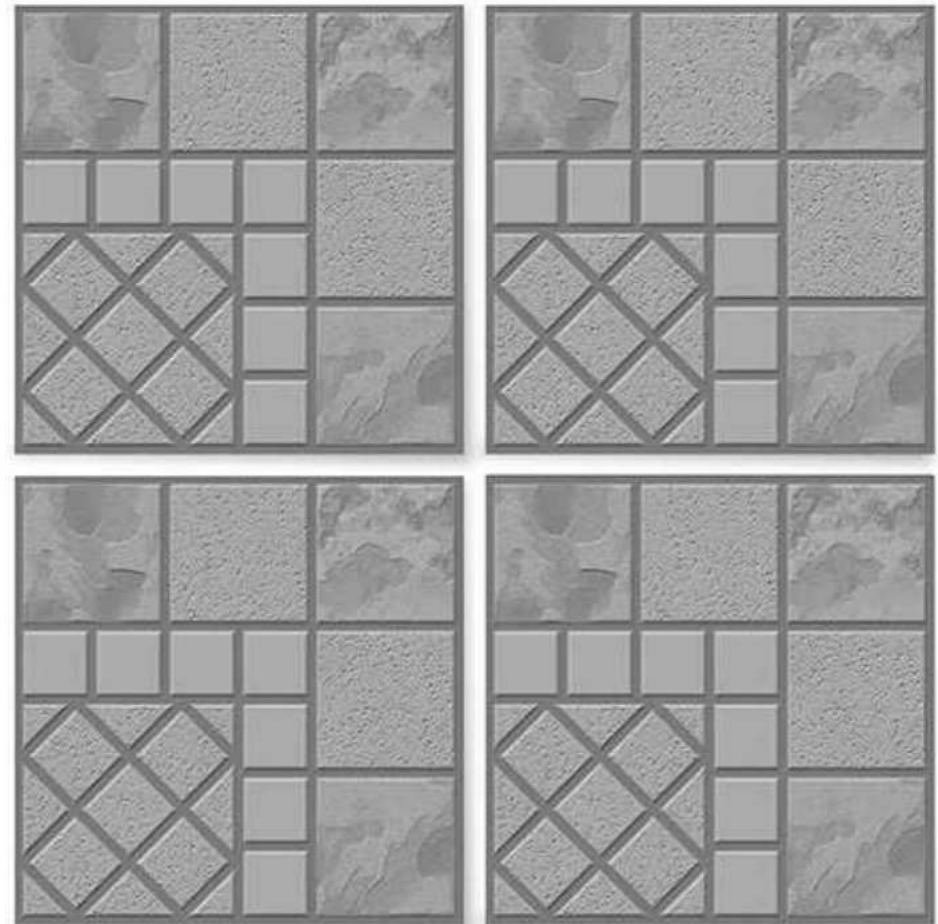
Malls & Restaurants

Public Area





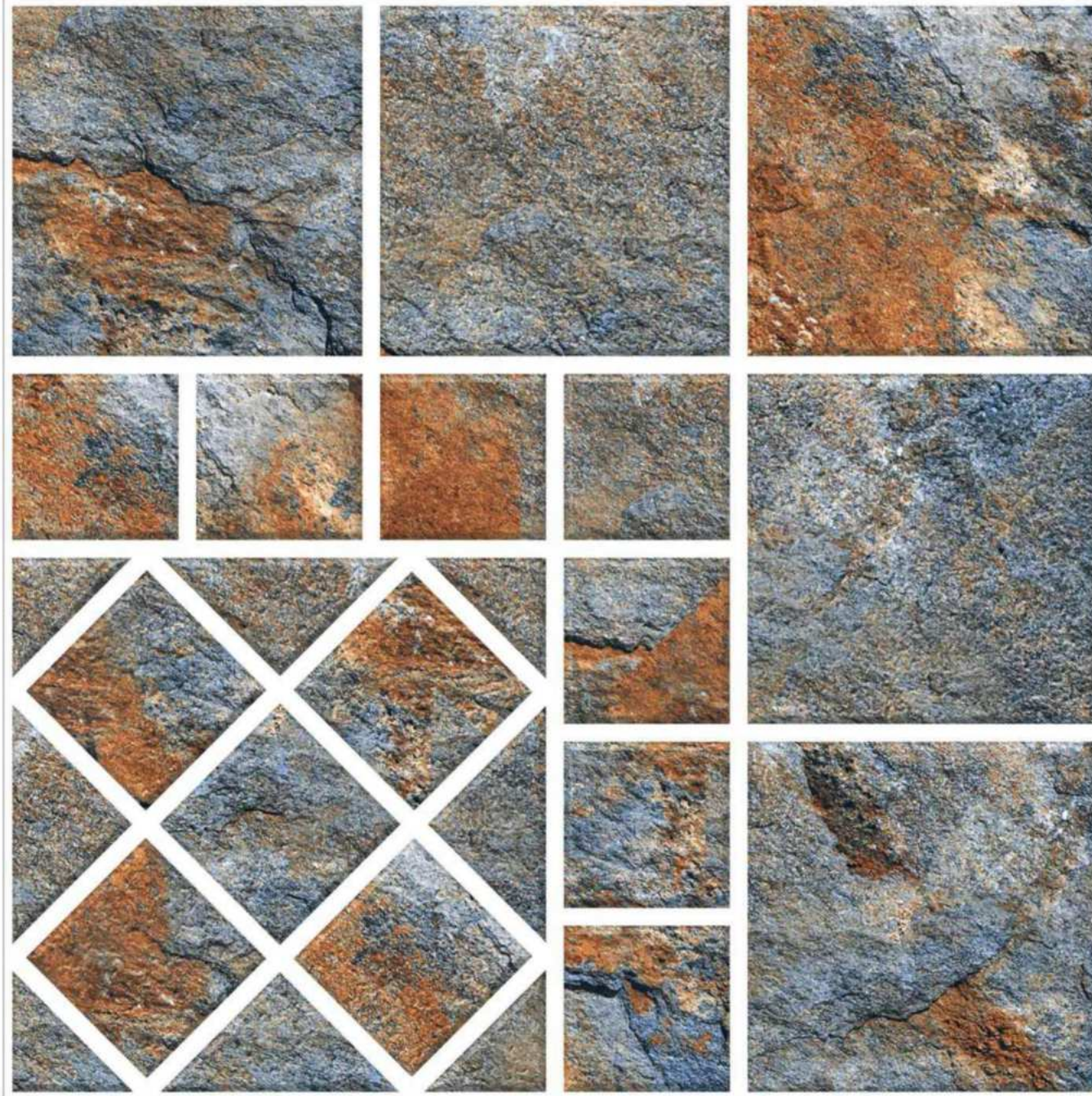
| Size | Finish | Thickness | Random |
|-------------------|-------------|--------------|----------|
| <u>500x500 mm</u> | <u>Matt</u> | <u>12 mm</u> | <u>1</u> |



Applications

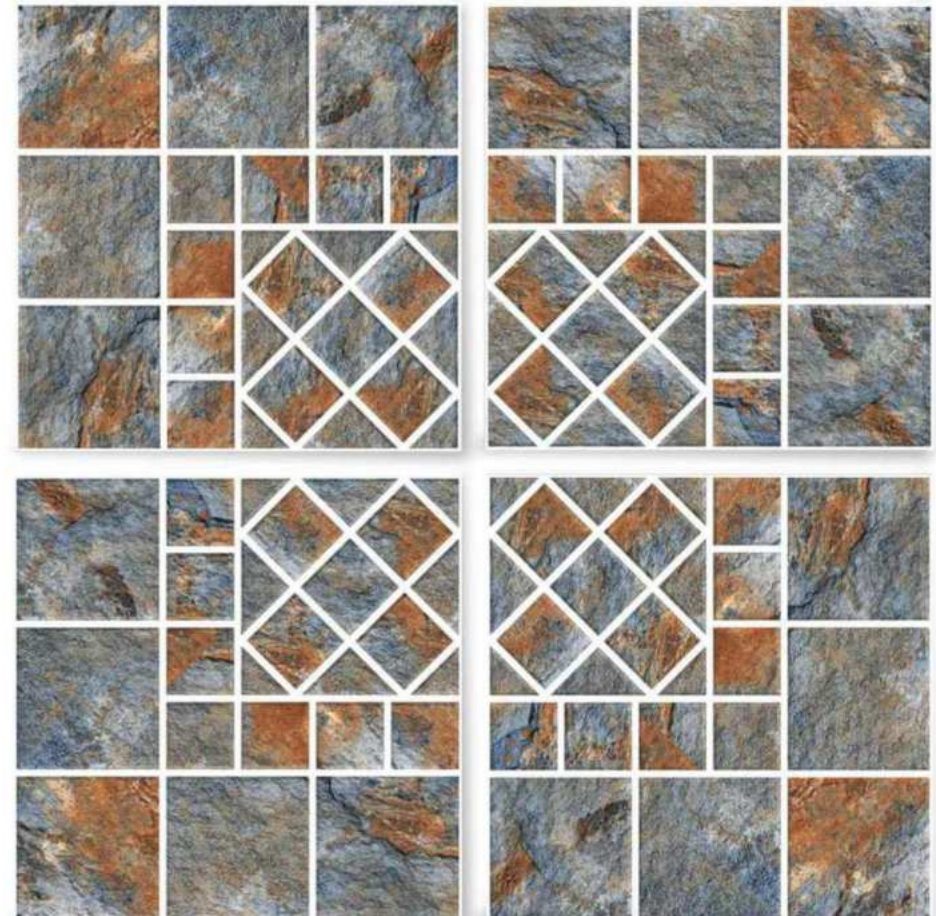


Residence Commercial Malls & Restaurants Public Area



21401

| Size | Finish | Thickness | Random |
|-------------------|-------------|--------------|----------|
| <u>500x500 mm</u> | <u>Matt</u> | <u>12 mm</u> | <u>1</u> |



Applications



Residence

Commercial

Malls & Restaurants

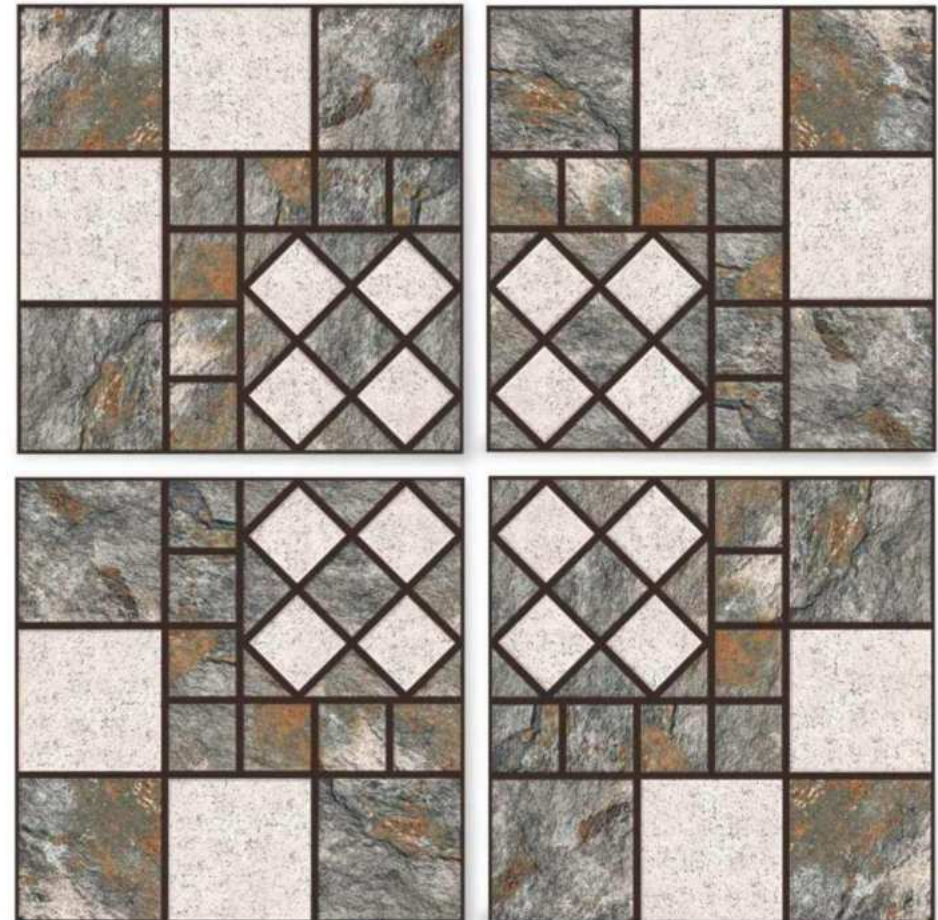
Public Area





21402

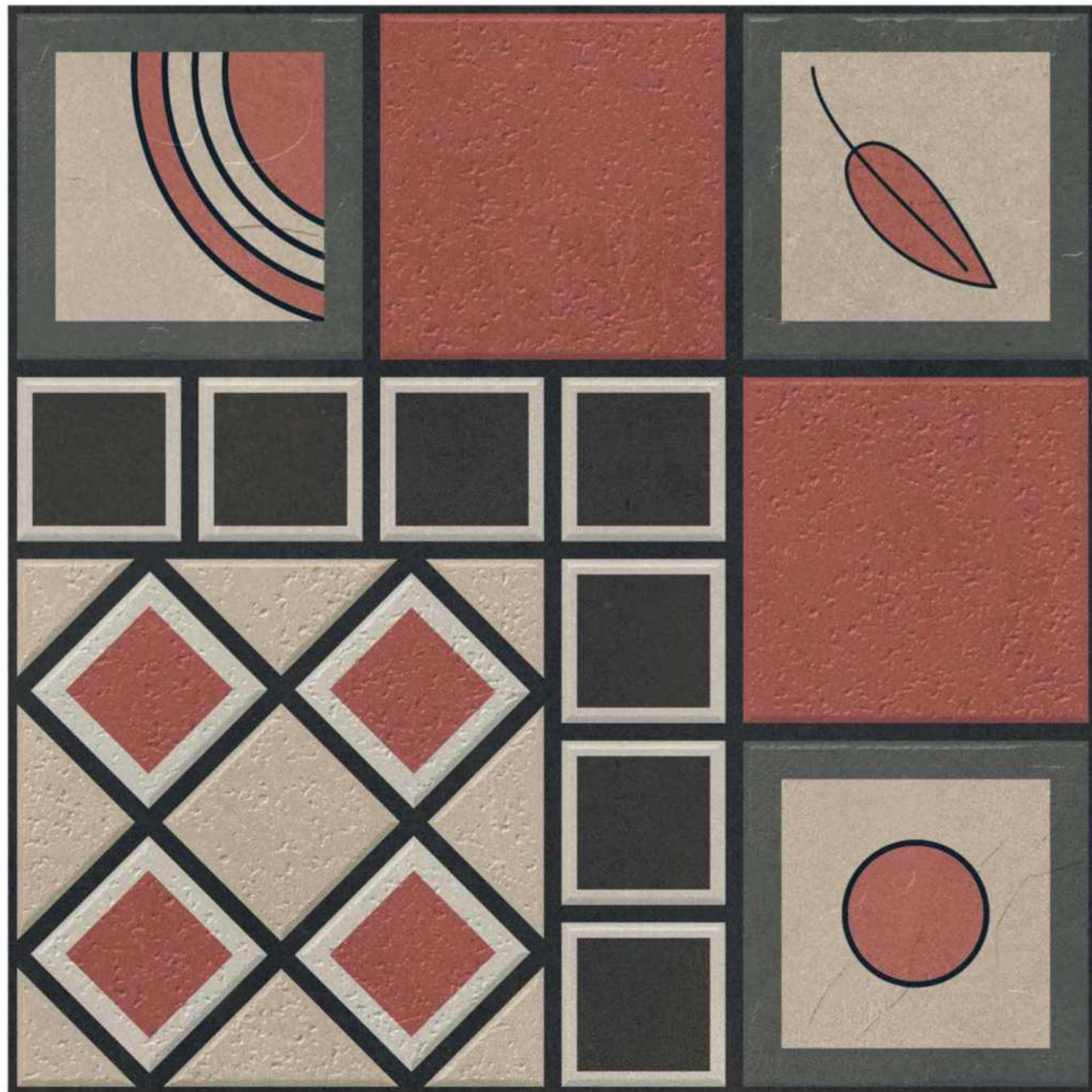
| Size | Finish | Thickness | Random |
|-------------------|-------------|--------------|----------|
| <u>500x500 mm</u> | <u>Matt</u> | <u>12 mm</u> | <u>1</u> |



Applications

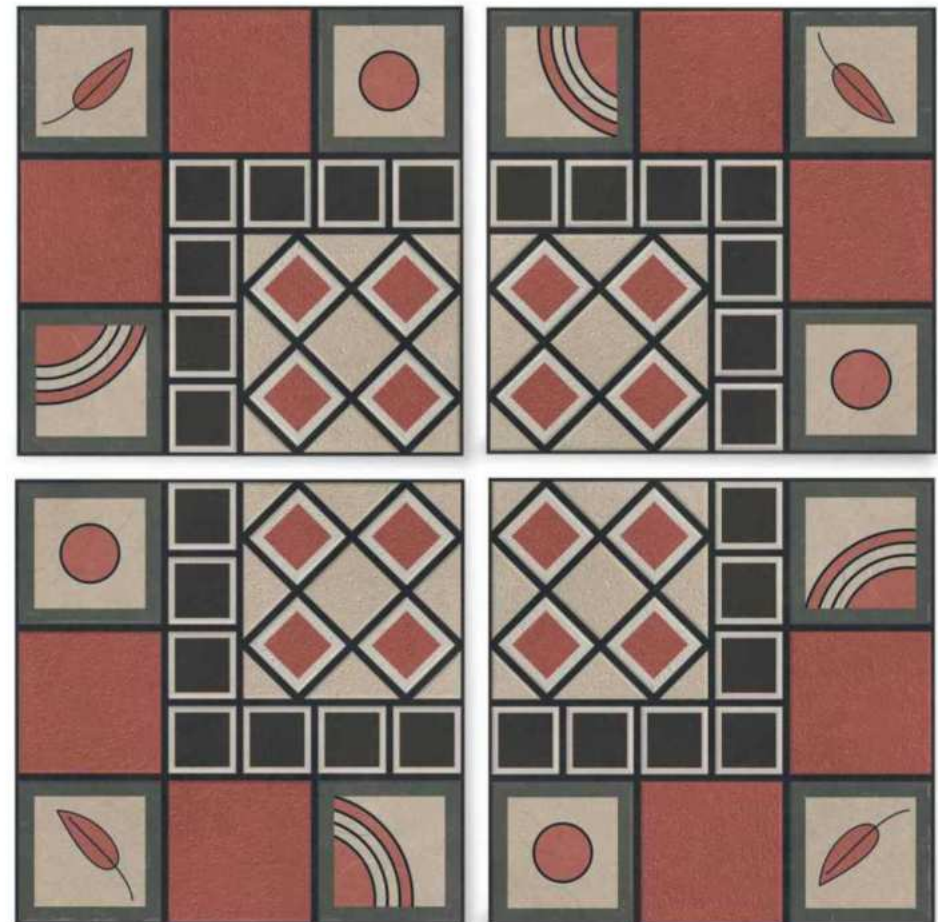






21403

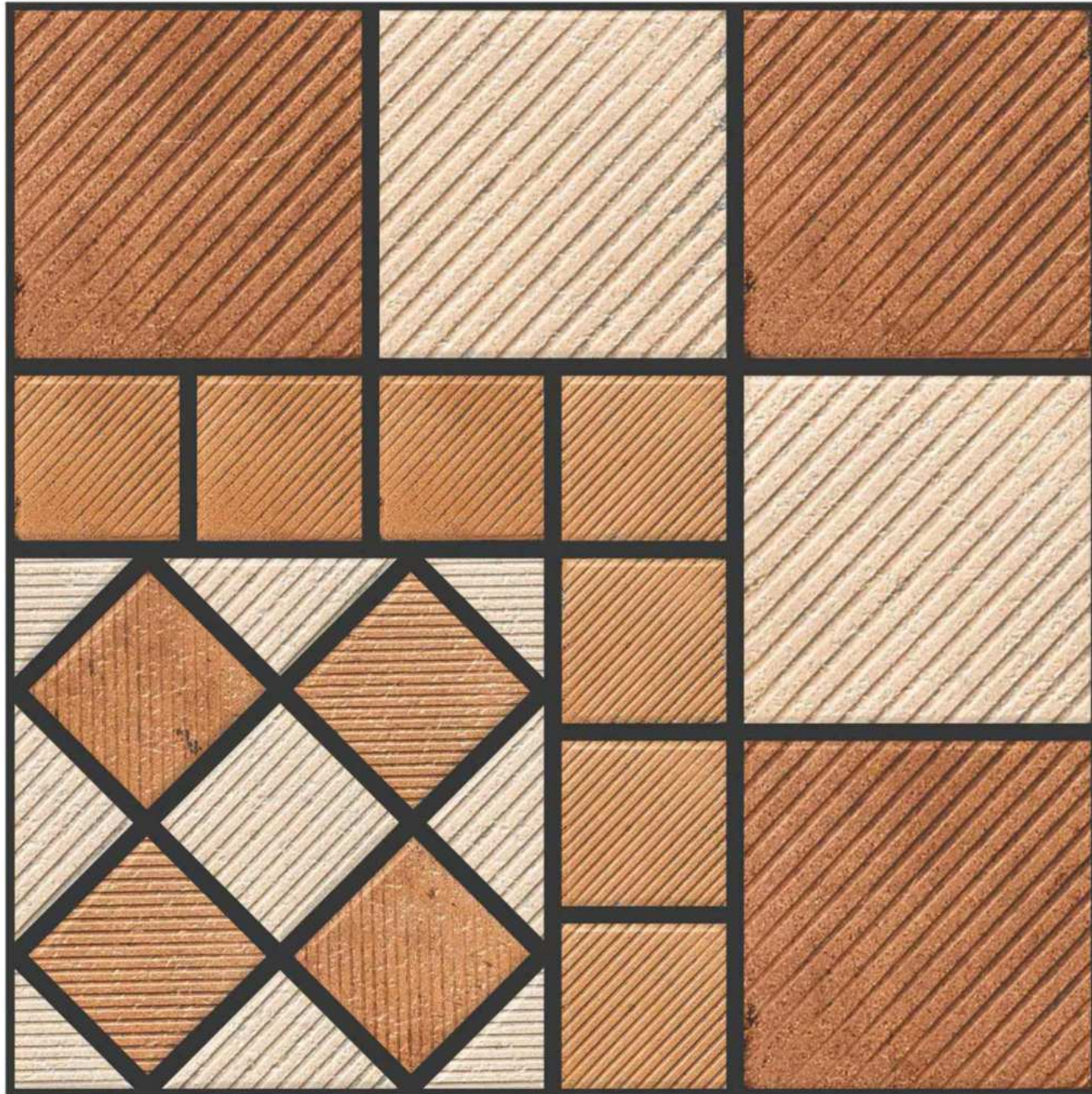
| Size | Finish | Thickness | Random |
|-------------------|-------------|--------------|----------|
| <u>500x500 mm</u> | <u>Matt</u> | <u>12 mm</u> | <u>1</u> |



Applications

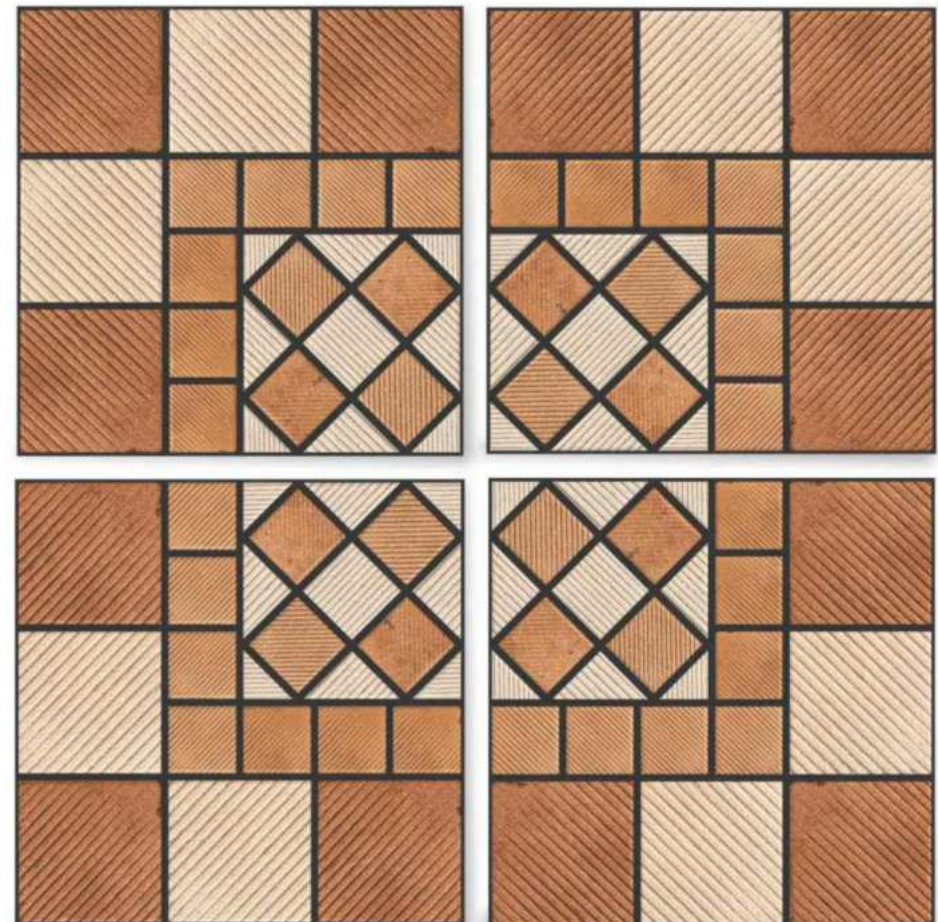






21404

| Size | Finish | Thickness | Random |
|-------------------|-------------|--------------|----------|
| <u>500x500 mm</u> | <u>Matt</u> | <u>12 mm</u> | <u>1</u> |



Applications



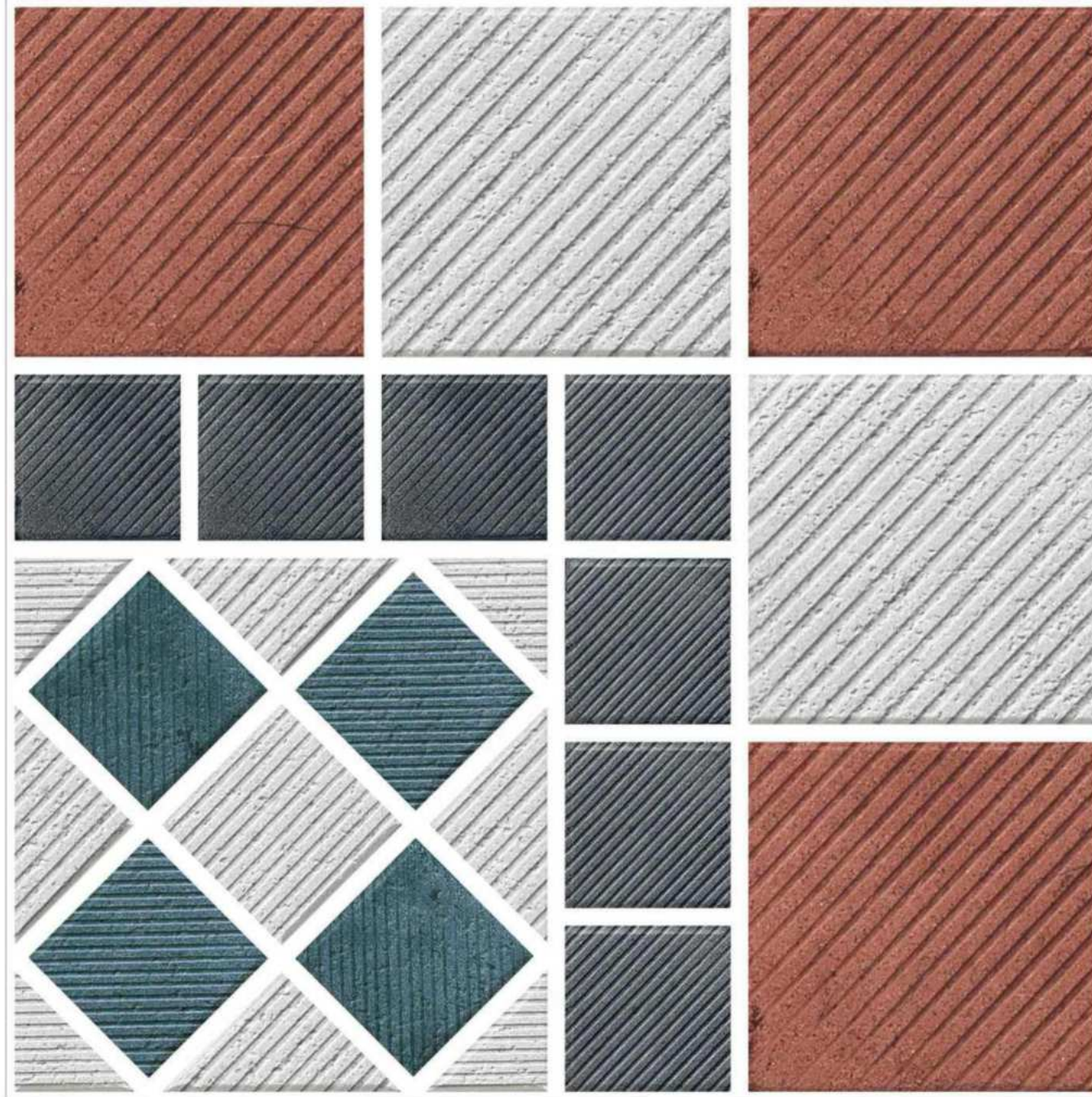
Residence

Commercial

Malls & Restaurants

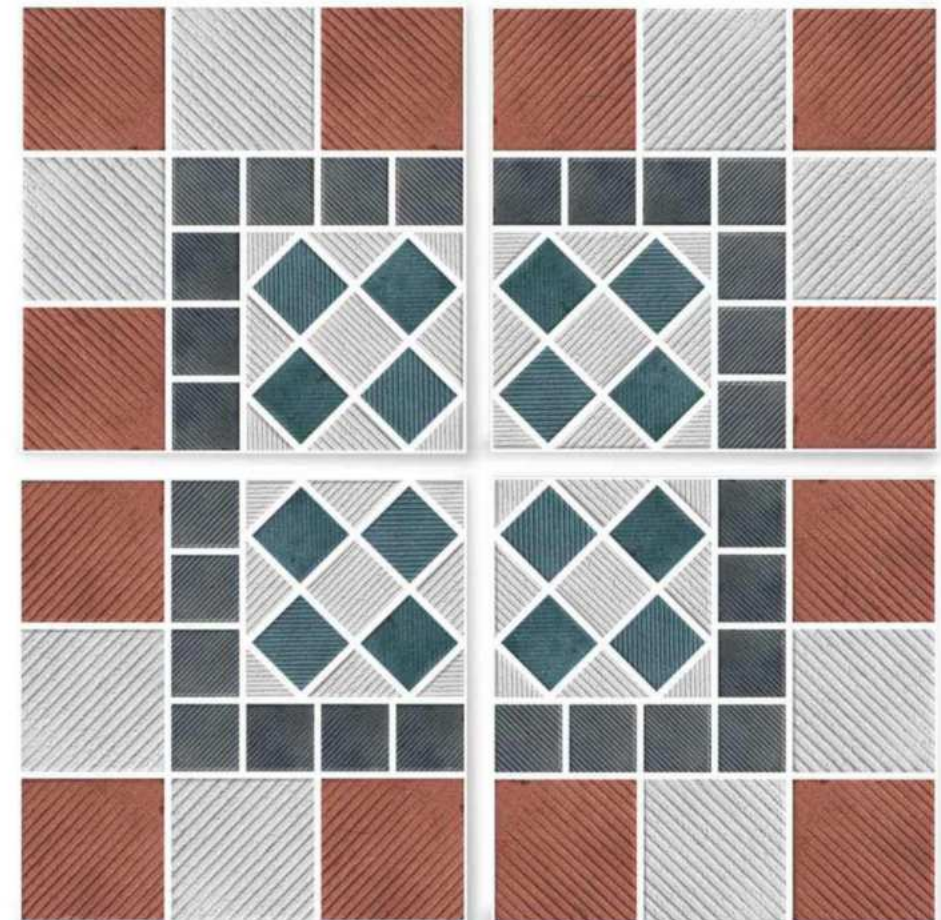
Public Area





21405

| Size | Finish | Thickness | Random |
|-------------------|-------------|--------------|----------|
| <u>500x500 mm</u> | <u>Matt</u> | <u>12 mm</u> | <u>1</u> |



Applications



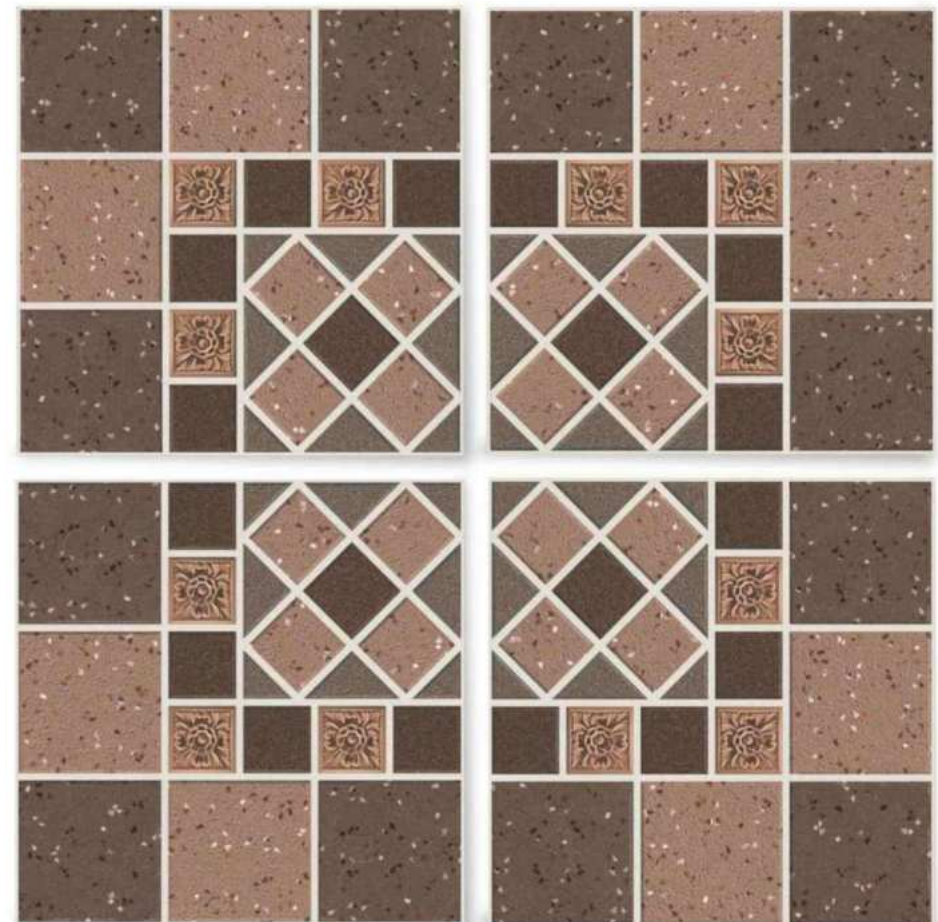
Residence Commercial Malls & Restaurants Public Area





21406

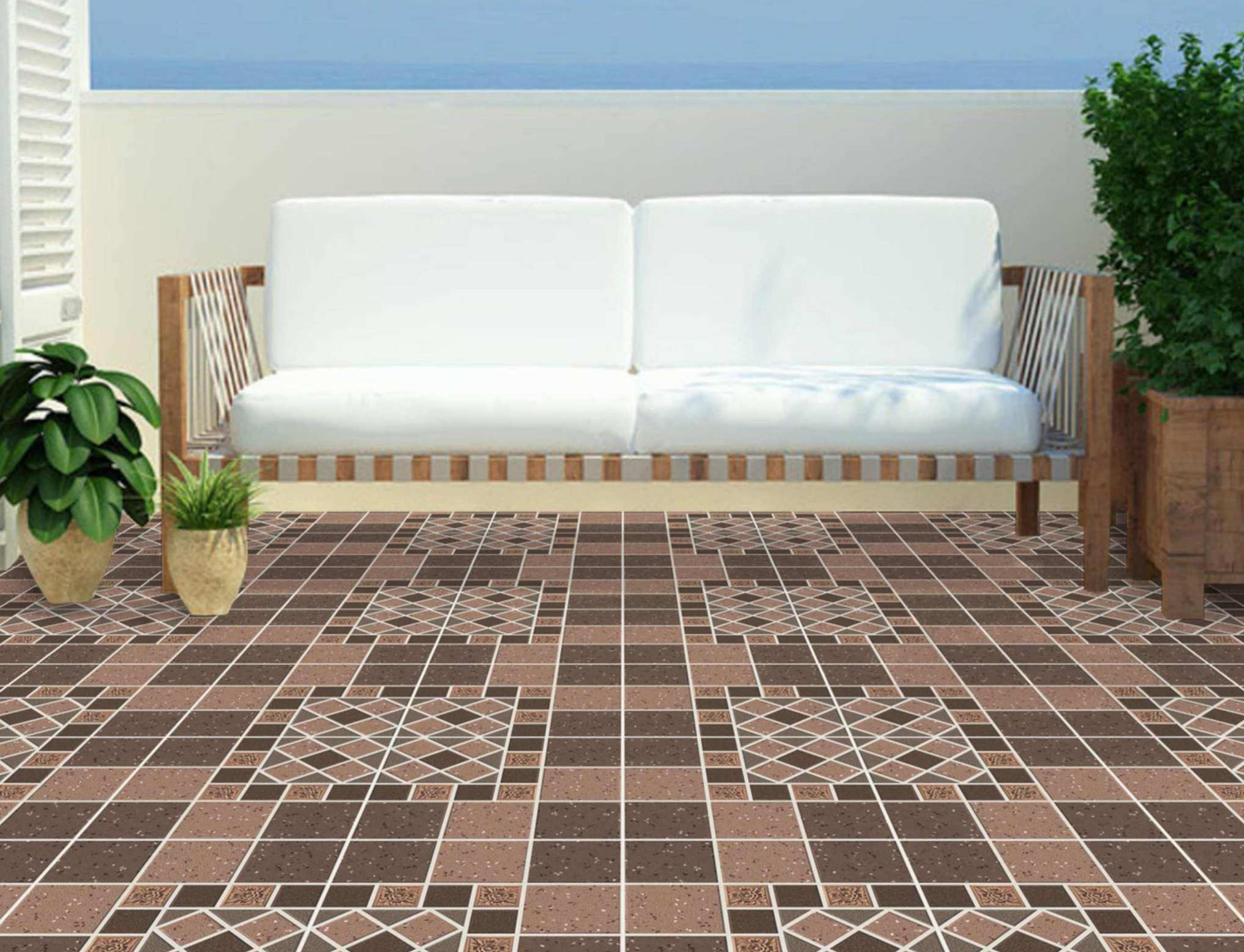
| Size | Finish | Thickness | Random |
|-------------------|-------------|--------------|----------|
| <u>500x500 mm</u> | <u>Matt</u> | <u>12 mm</u> | <u>1</u> |



Applications



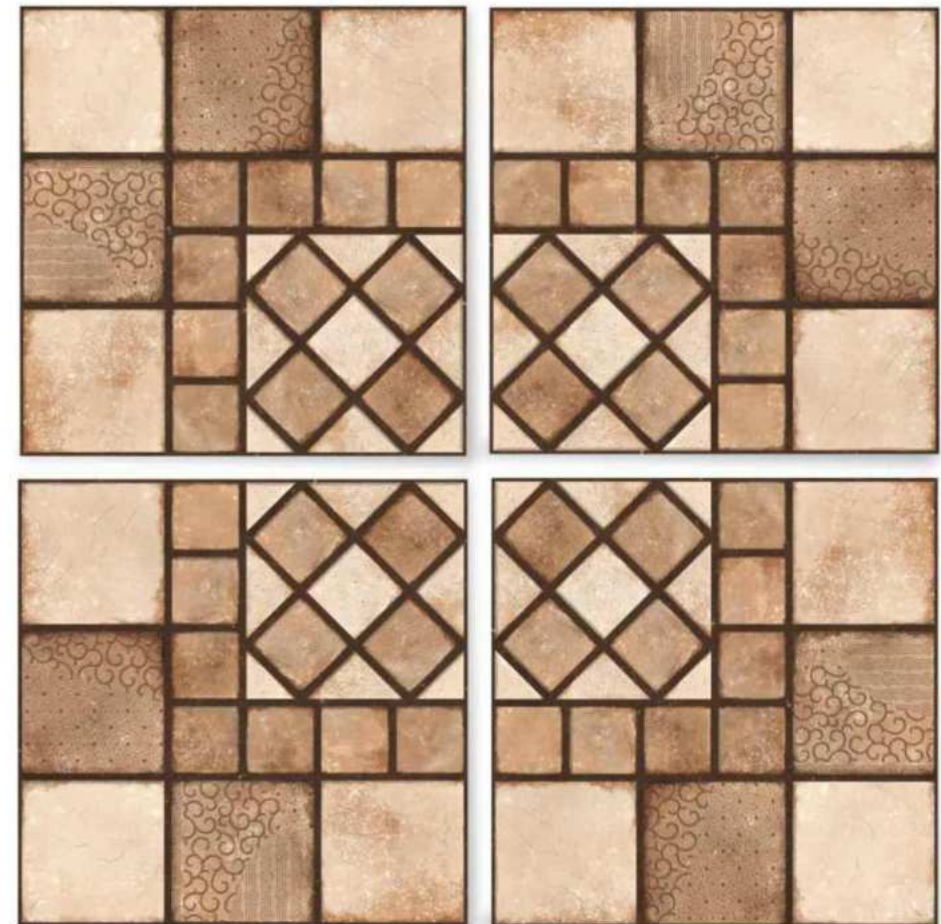
Residence Commercial Malls & Restaurants Public Area





21407

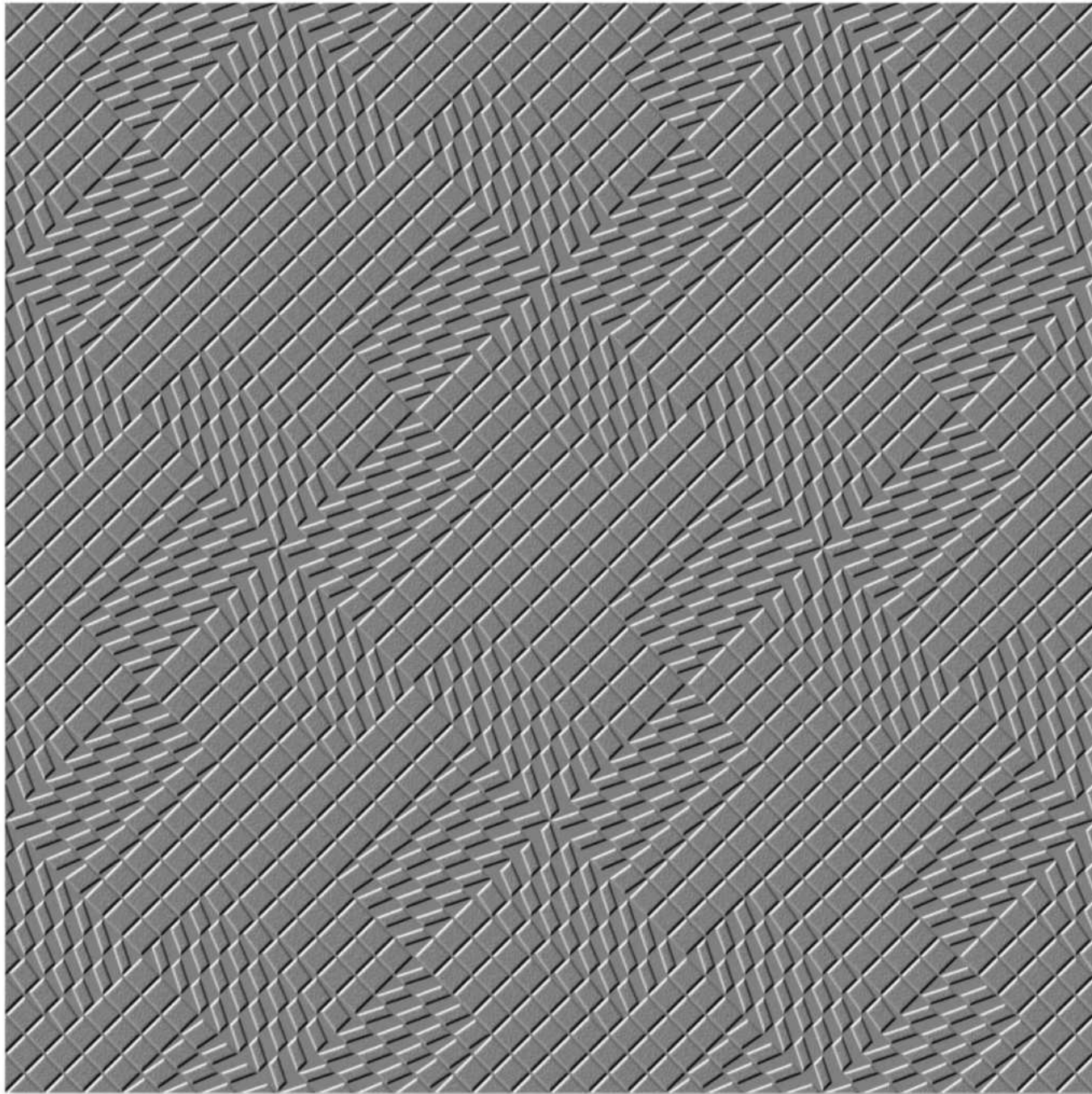
| Size | Finish | Thickness | Random |
|-------------------|-------------|--------------|----------|
| <u>500x500 mm</u> | <u>Matt</u> | <u>12 mm</u> | <u>1</u> |



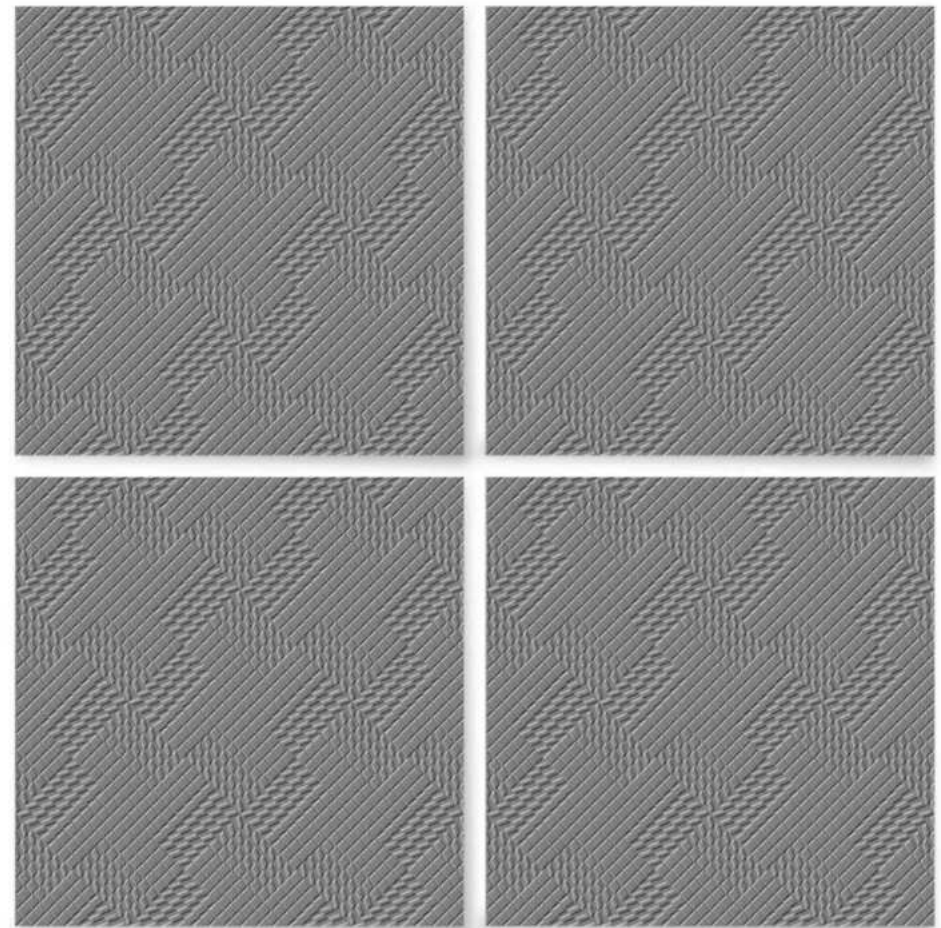
Applications







| Size | Finish | Thickness | Random |
|-------------------|-------------|--------------|----------|
| <u>500x500 mm</u> | <u>Matt</u> | <u>12 mm</u> | <u>1</u> |



Applications



Residence



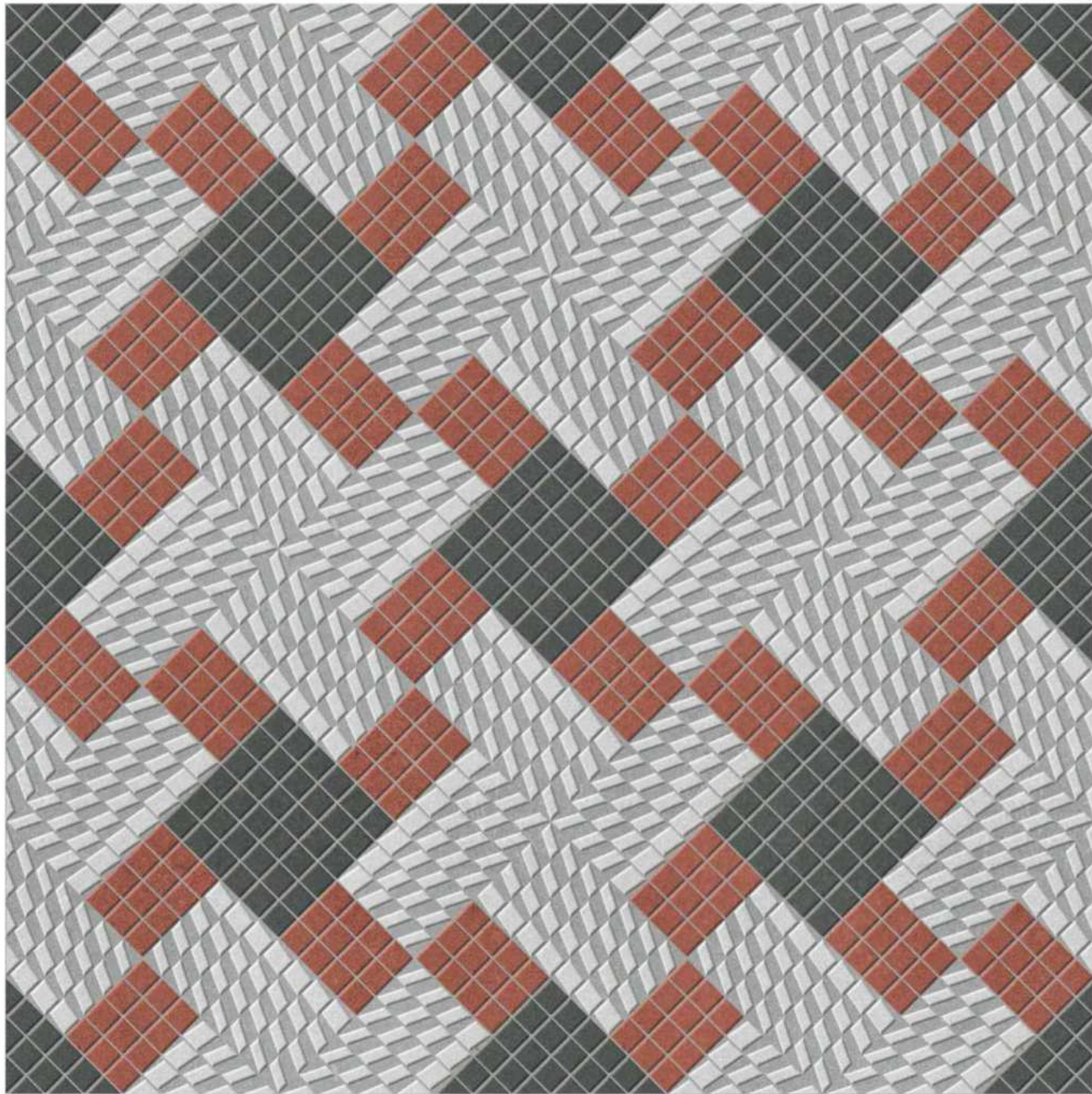
Commercial



Malls &
Restaurants

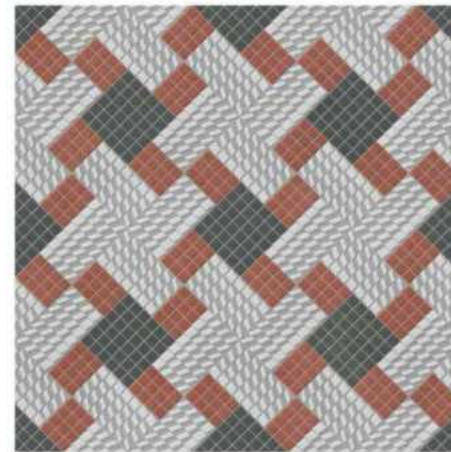


Public
Area



21501

| Size | Finish | Thickness | Random |
|-------------------|-------------|--------------|----------|
| <u>500x500</u> mm | <u>Matt</u> | <u>12</u> mm | <u>1</u> |



Applications







21502

| Size | Finish | Thickness | Random |
|-------------------|-------------|--------------|----------|
| <u>500x500</u> mm | <u>Matt</u> | <u>12</u> mm | <u>1</u> |



Applications





TECHNICAL SPECIFICATION

| CHARACTERISTIC | International Std. ISO13006/EN 176 Group Bla | SAKETILES Value | Method of Testing |
|--|--|---------------------------|----------------------|
| 1. Deviation in Length | ±0.6% | ±0.1% | EN 98 |
| 2. Deviation in Thickness | ±5% | ±4% | EN 98 |
| 3. Straightness of Sides | ±0.5% | ±0.1% | EN 98 |
| 4. Rectangularity | ±0.6% | ±0.2% | EN 98 |
| 5. Surface Flatness | ±0.5% | ±0.3% | EN 98 |
| 6. Water Absorption * | <0.5% | <0.3% | EN 99 |
| 7. Mohs Hardness * | > 6 | > 7 | EN 101 |
| 8. Flexural Straightness * | > 27 N/mm ² | > 47 N/mm ² | EN 100 |
| 9. Abrasion Resistance | < 204 mm ³ | < 98 mm ³ | EN 102 |
| 10. Skid Resistance (Friction Coefficient) | > 0.4 | > 0.6 | ASTM C-1028 |
| 11. Breaking Strength * | > 1113 N | > 2830 N | ASTM C-648 |
| 12. Density (g/cc) | > 2 | > 2.4 | DIN 51082 |
| 13. Frost Resistance | Frost proof | Frost proof | EN 202 |
| 14. Chemical Resistance | No damage | No damage | EN 106 |
| 15. Thermal Shock Resistance | No damage | No damage | EN 104 |
| 16. Colour Resistance | No damage | No damage | DIN 51094 |
| 17. Thermal Expansion | < 9 x 10 ⁻⁶ | < 6 x 10 ⁻⁶ | EN 103 |
| 18. Stain Resistance | Resistant | Resistant | ISO 10545-14 |
| 19. Moisture Expansion | Nil | Nil | ISO 10545-10 |
| 20. Glossiness | — | Min. 65% - 70% reflection | Glossmeter |

| Sr.no. | Size | Thickness (Approx) | Tiles Per Box (Approx) | Coverage Area (sq.mtr) (Approx) | Weight (Approx) |
|--------|--------------------|-----------------------|---------------------------|------------------------------------|--------------------|
| 1. | DIGITAL 500X500 MM | 12 MM | 3 PCS | 0.76 | 16.5 Kgs |

Thank you

Saket

SAKET TILES INDIA LLP

info@sakrttiles.com

export@sakettiles.com

Survey No.454,
At-Shapar,Jashmatgadh,Jetpar Road
opp-pavadiyari bas stand, Morbi, Gujarat-363642